



WESTERN GATEWAY ZONE

CONCEPT: Beginning the Urban Waterway

These draft design concepts were developed by the Metropolitan Sewer District of Greater Cincinnati (MSD) with input from the community and public/private partners to show potential design alternatives for a proposed urban waterway in South Fairmount (Cincinnati, Ohio). The draft concepts were presented for public review at the Lick Run Community Design Workshop #2 on October 26, 2011 in Cincinnati and will continue to go through additional analysis, review and refinement by MSD, public/private partners and the community prior to integration into a Lick Run Master Plan. The U.S. EPA has final approval over implementation of this project.

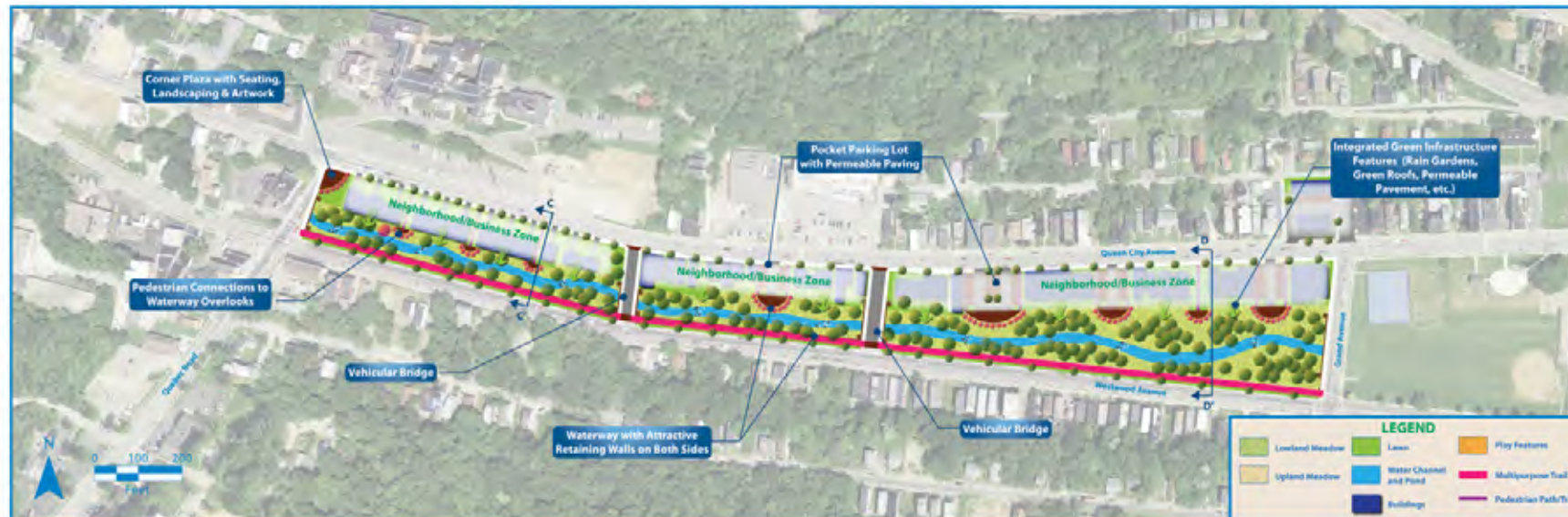


CONCEPT 1: Waterside Pedestrian Walkway



These draft design concepts were developed by the Metropolitan Sewer District of Greater Cincinnati (MSD) with input from the community and public/private partners to show potential design alternatives for a proposed urban waterway in South Fairmount (Cincinnati, Ohio). The draft concepts were presented for public review at the Lick Run Community Design Workshop #2 on October 26, 2011 in Cincinnati and will continue to go through additional analysis, review and refinement by MSD, public/private partners and the community prior to integration into a Lick Run Master Plan. The U.S. EPA has final approval over implementation of this project.

CONCEPT 2: Waterside Overlooks

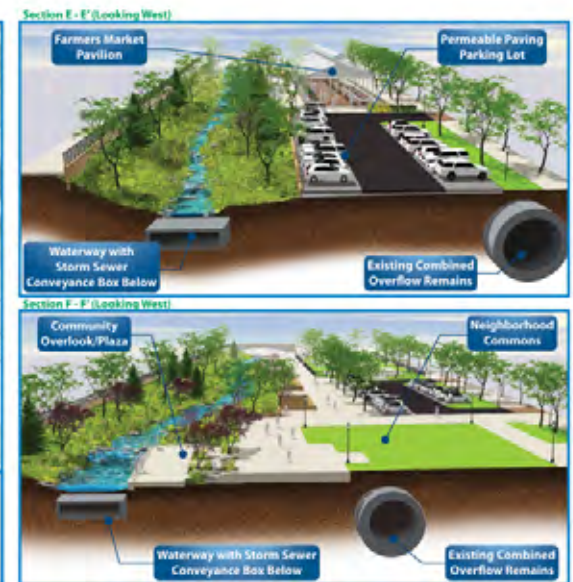
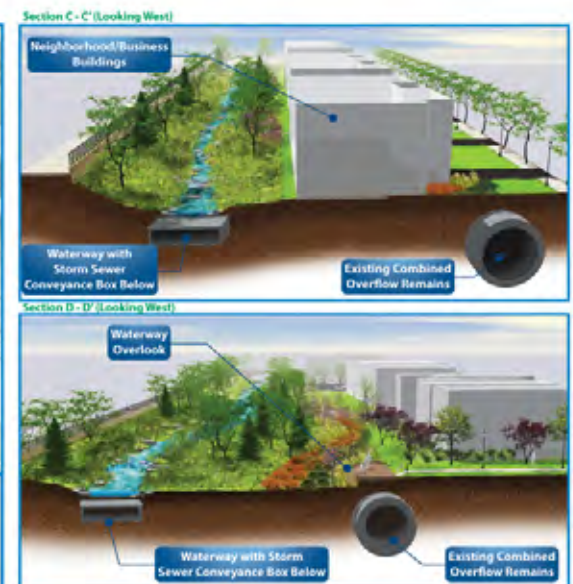
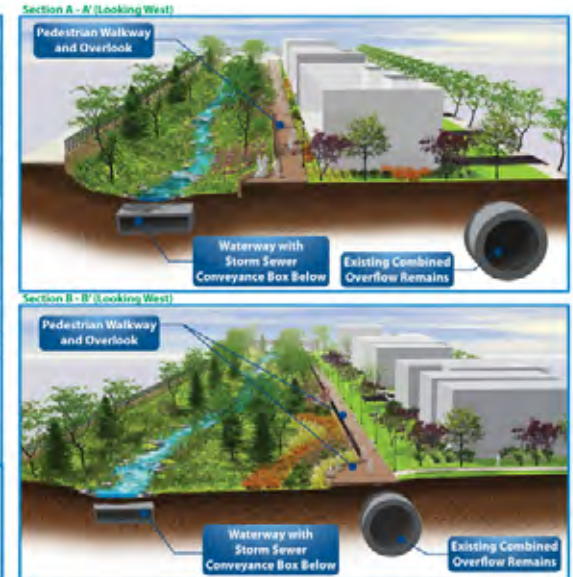


These draft design concepts were developed by the Metropolitan Sewer District of Greater Cincinnati (MSD) with input from the community and public/private partners to show potential design alternatives for a proposed urban waterway in South Fairmount (Cincinnati, Ohio). The draft concepts were presented for public review at the Lick Run Community Design Workshop #2 on October 26, 2011 in Cincinnati and will continue to go through additional analysis, review and refinement by MSD, public/private partners and the community prior to integration into a Lick Run Master Plan. The U.S. EPA has final approval over implementation of this project.

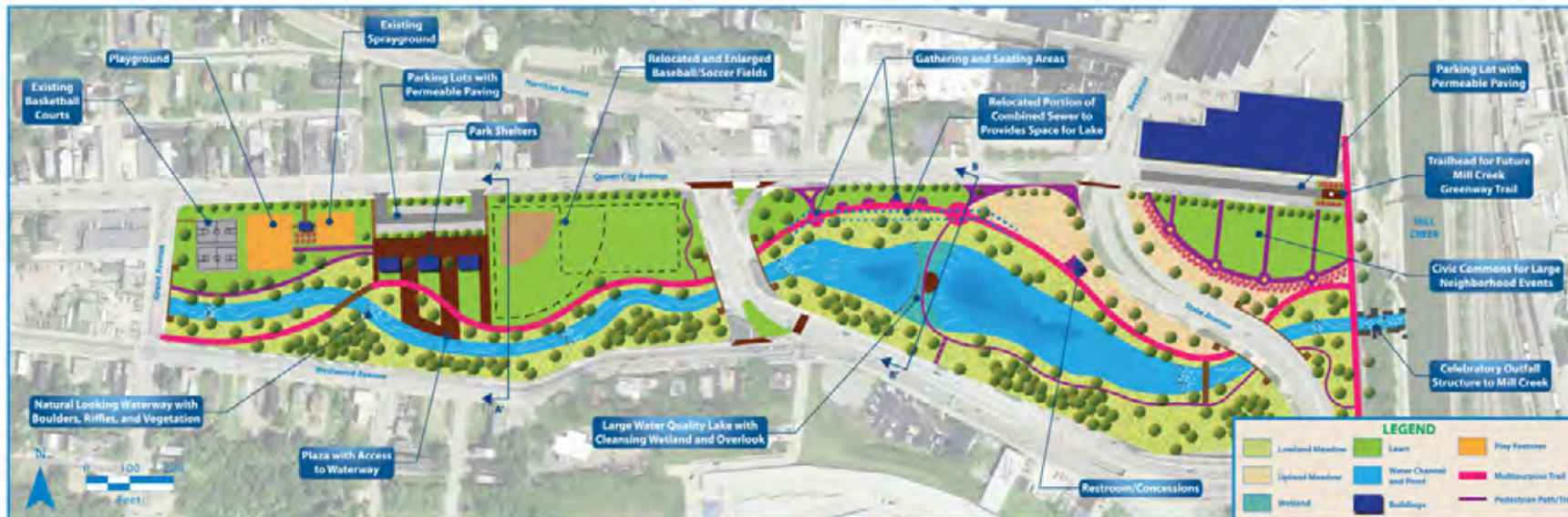
CONCEPT 3: Community Park



These draft design concepts were developed by the Metropolitan Sewer District of Greater Cincinnati (MSD) with input from the community and public/private partners to show potential design alternatives for a proposed urban waterway in South Fairmount (Cincinnati, Ohio). The draft concepts were presented for public review at the Lick Run Community Design Workshop #2 on October 26, 2011 in Cincinnati and will continue to go through additional analysis, review and refinement by MSD, public/private partners and the community prior to integration into a Lick Run Master Plan. The U.S. EPA has final approval over implementation of this project.



CONCEPT 1: Community Recreation and Open Space



These draft design concepts were developed by the Metropolitan Sewer District of Greater Cincinnati (MSD) with input from the community and public/private partners to show potential design alternatives for a proposed urban waterway in South Fairmount (Cincinnati, Ohio). The draft concepts were presented for public review at the Lick Run Community Design Workshop #2 on October 26, 2011 in Cincinnati and will continue to go through additional analysis, review and refinement by MSD, public/private partners and the community prior to integration into a Lick Run Master Plan. The U.S. EPA has final approval over implementation of this project.

CONCEPT 2: Community Hub and Wetland

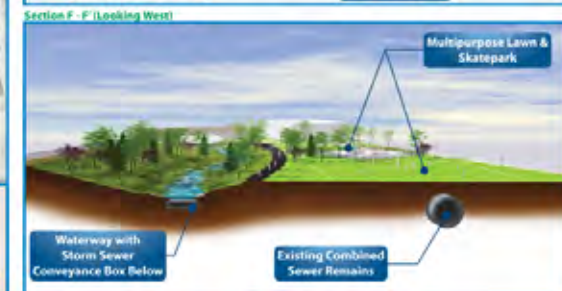
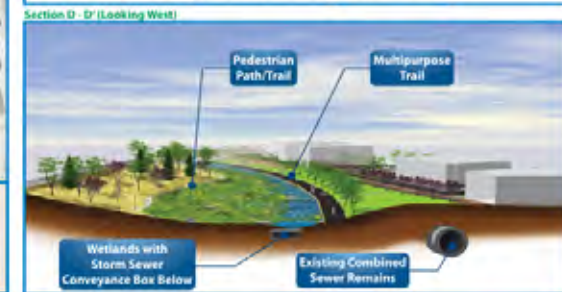
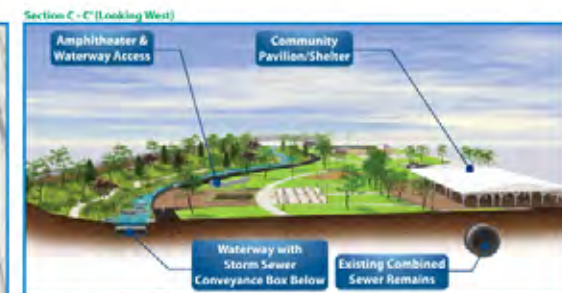
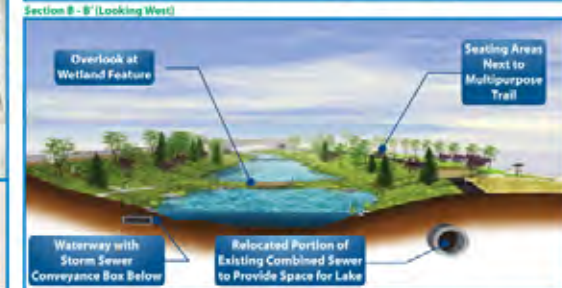


These draft design concepts were developed by the Metropolitan Sewer District of Greater Cincinnati (MSD) with input from the community and public/private partners to show potential design alternatives for a proposed urban waterway in South Fairmount (Cincinnati, Ohio). The draft concepts were presented for public review at the Lick Run Community Design Workshop #2 on October 26, 2011 in Cincinnati and will continue to go through additional analysis, review and refinement by MSD, public/private partners and the community prior to integration into a Lick Run Master Plan. The U.S. EPA has final approval over implementation of this project.

CONCEPT 3: Small Lake and Braided Wetlands



These draft design concepts were developed by the Metropolitan Sewer District of Greater Cincinnati (MSD) with input from the community and public/private partners to show potential design alternatives for a proposed urban waterway in South Fairmount (Cincinnati, Ohio). The draft concepts were presented for public review at the Lick Run Community Design Workshop #2 on October 26, 2011 in Cincinnati and will continue to go through additional analysis, review and refinement by MSD, public/private partners and the community prior to integration into a Lick Run Master Plan. The U.S. EPA has final approval over implementation of this project.





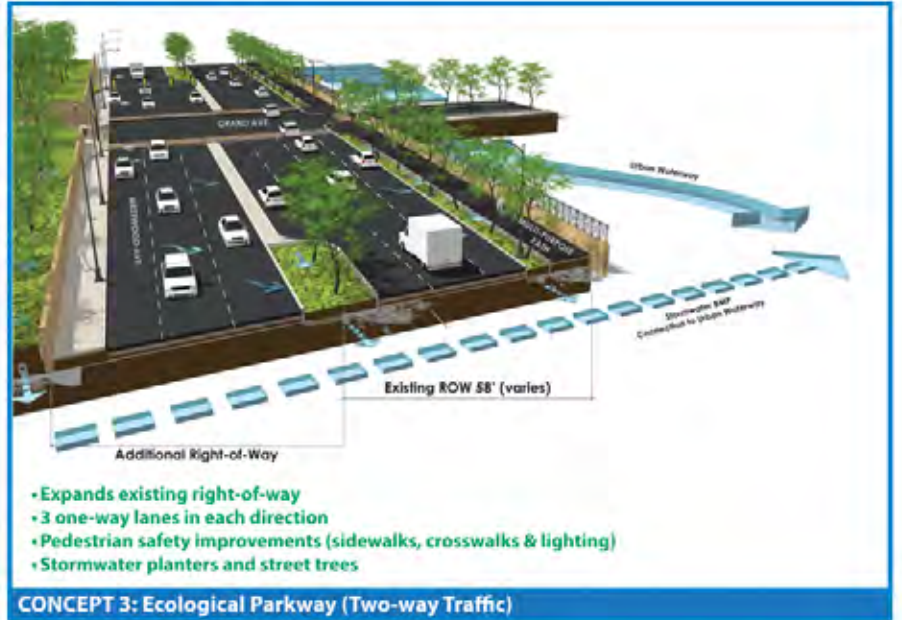
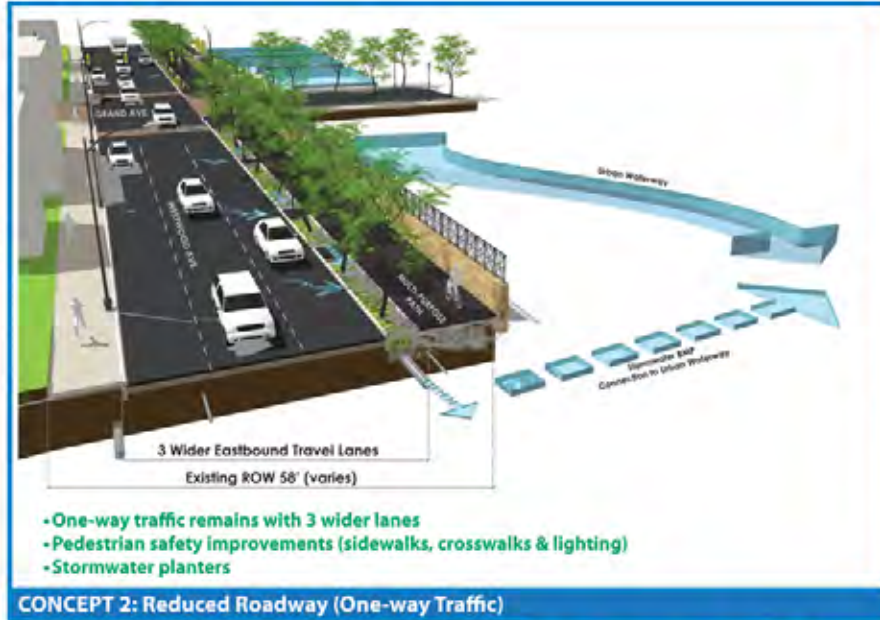
Queen City Avenue

These draft design concepts and planning guidelines were developed by the Metropolitan Sewer District of Greater Cincinnati (MSD) with input from the community and public/private partners. They are conceptual only and represent potential long-term opportunities, through public and private investments, in the Lick Run Watershed. They were presented for public review at the Lick Run Community Design Workshop #2 on October 26, 2011 in Cincinnati and will continue to go through additional analysis, review and refinement by MSD, public/private partners and the community prior to integration into a Lick Run Master Plan.



Westwood Avenue

These draft design concepts and planning guidelines were developed by the Metropolitan Sewer District of Greater Cincinnati (MSD) with input from the community and public/private partners. They are conceptual only and represent potential long-term opportunities, through public and private investments, in the Lick Run Watershed. They were presented for public review at the Lick Run Community Design Workshop #2 on October 26, 2011 in Cincinnati and will continue to go through additional analysis, review and refinement by MSD, public/private partners and the community prior to integration into a Lick Run Master Plan.

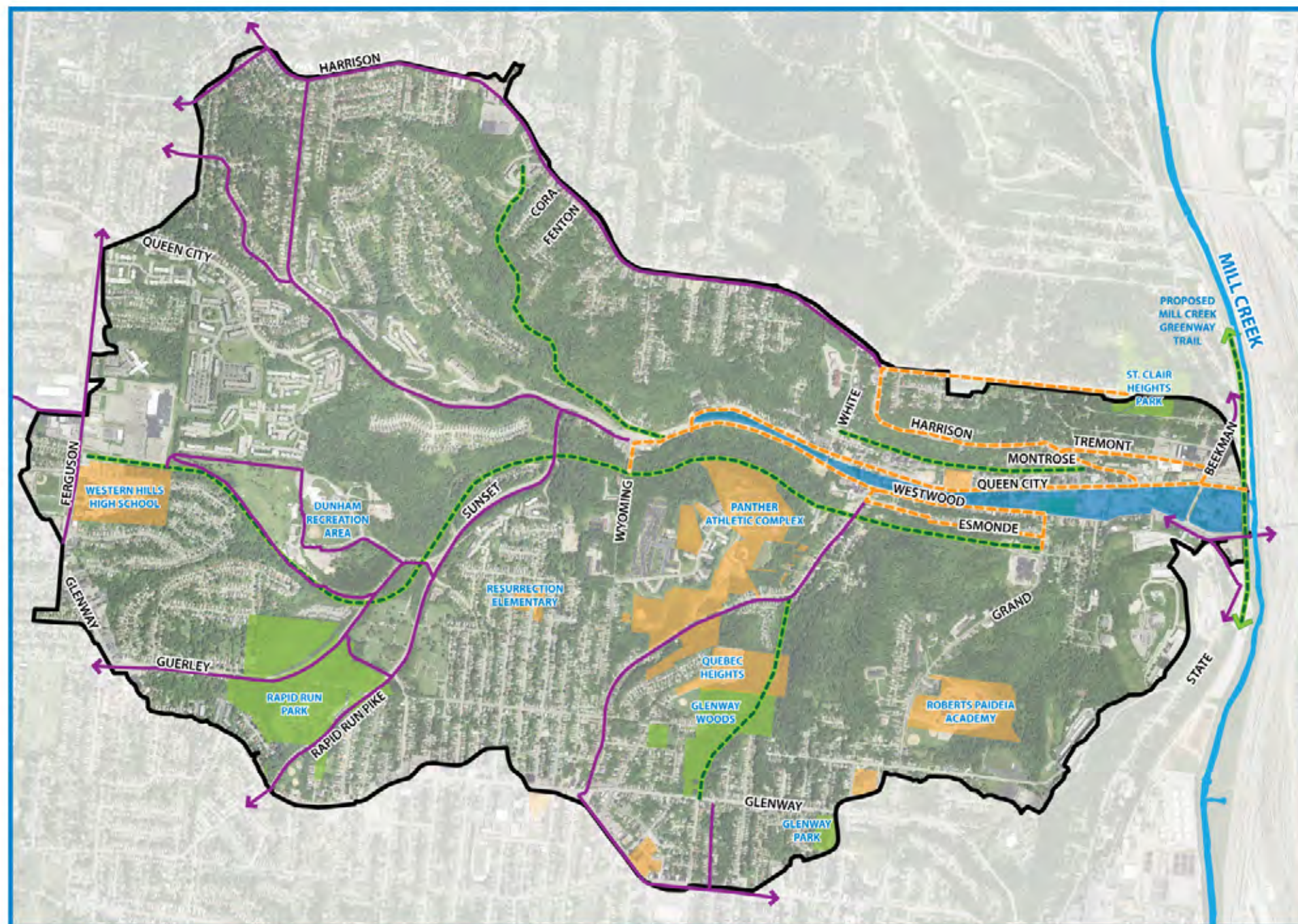


TRANSPORTATION NETWORK OPPORTUNITIES



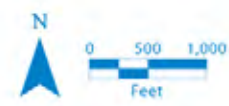


Cincinnati Bicycle Transportation Plan (June 2010)
Plan Review & Assessment Underway



These draft design concepts and planning guidelines were developed by the Metropolitan Sewer District of Greater Cincinnati (MSD) with input from the community and public/private partners. They are conceptual only and represent potential long-term opportunities, through public and private investments, in the Lick Run Watershed. They were presented for public review at the Lick Run Community Design Workshop #2 on October 26, 2011 in Cincinnati and will continue to go through additional analysis, review and refinement by MSD, public/private partners and the community prior to integration into a Lick Run Master Plan.

TRAIL NETWORK OPPORTUNITIES





WATERSHED GUIDING PRINCIPLES

Guiding principles are statements of intent that describe the conceptual direction of future growth. These principles should be used to help guide infrastructure and revitalization decisions and to foster a high-quality community with a distinct sense of place.

- Coordinate policies and leverage investment.
- Promote an integrated network of green infrastructure.
- Revitalize the economy through creation of jobs and growth opportunities for local businesses.
- Support existing communities.
- Promote a balanced mixed-use neighborhood.
- Benefit watershed communities through environmentally, socially, and economically sustainable solutions.
- Provide more transportation choices.
- Use quality design to create an attractive public/private realm.

LICK RUN WATERSHED TRANSECT

A watershed transect is a method for organizing planning principles based on the watershed's unique physical characteristics.

RIDGETOP COMMUNITIES

Environmentally-sensitive development will be used in future projects.

Bike and walking paths will be encouraged for new development and areas undergoing redevelopment.

Places will be connected to improve the function of the street network and create opportunities for **alternative transportation** (e.g., walking, biking, and accessing public transit).

Future revitalization efforts will build upon the **existing neighborhood fabric**.

FORESTED HILLSIDES

The watershed's **forested hillsides** will be preserved and responsibly managed.

New construction will **minimize impacts** on the natural environment.

COMMUNITY CORE

Future revitalization efforts will build upon the **existing neighborhood fabric**.

Parking in the business district will be provided by a balanced mix of on-street and surface lots integrated between buildings.

Future development will incorporate **traditional and modern architectural forms**.

The business district should represent a **vibrant live/work zone**, including basic services and reusing existing buildings where possible.

Places will be connected to improve the function of the street network and create opportunities for **alternative transportation**.

Environmentally-sensitive development will be used in future projects.

OPEN SPACE CORRIDOR

The proposed urban waterway will retain **natural qualities** while complementing the surrounding urban context.

Green infrastructure features (e.g., rain garden, bioswale, trees) will be integrated throughout the proposed urban waterway corridor to improve **water quality**.

Open gathering spaces will allow for passive recreation and for community events.

Active recreation facilities will emphasize bike and pedestrian trails.

Civic spaces will focus on small, green areas for personal interaction, but also include common areas for community events.

GREEN PLANNING PRINCIPLES

These draft design concepts and planning guidelines were developed by the Metropolitan Sewer District of Greater Cincinnati (MSD) with input from the community and public/private partners. They are conceptual only and represent potential long-term opportunities, through public and private investments, in the Lick Run Watershed. They were presented for public review at the Lick Run Community Design Workshop #2 on October 26, 2011 in Cincinnati and will continue to go through additional analysis, review and refinement by MSD, public/private partners and the community prior to integration into a Lick Run Master Plan.

