

WESTERN GATEWAY ZONE Beginning the Urban Waterway

These handouts were developed by the Metropolitan Sewer District of Greater Cincinnati (MSD) as part of small group sessions at the Lick Run Community Design Workshop #2 on October 26, 2011 in Cincinnati, Ohio. Participants were asked to review these handouts and to identify the perceived strengths and weaknesses of the draft design concepts and planning guidelines as presented. The feedback gathered from the workshop participants will be combined with technical evaluations to develop a Lick Run Master Plan that will define potential short- and long-term solutions for reducing combined sewer overflows (CSOs) from the Lick Run watershed into the Mill Creek.

Concept Description

	<u>Strength</u>	<u>Weakness</u>
Large wetland feature to improve water quality	<input type="radio"/>	<input type="radio"/>
Outfall feature and smaller wetland near beginning of waterway	<input type="radio"/>	<input type="radio"/>
Potential for neighborhood gateway and educational signage	<input type="radio"/>	<input type="radio"/>
Potential for neighborhood parking lot with trailhead access	<input type="radio"/>	<input type="radio"/>

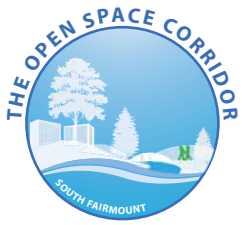
Community Goals (preferences from Community Design Workshop #1)

	<u>Strength</u>	<u>Weakness</u>
Waterway with natural stone and vegetation	<input type="radio"/>	<input type="radio"/>
Multipurpose trail	<input type="radio"/>	<input type="radio"/>
Gathering places and pedestrian walkways	<input type="radio"/>	<input type="radio"/>
Off-street surface parking lots	<input type="radio"/>	<input type="radio"/>
Green infrastructure features integrated into surface parking lots	<input type="radio"/>	<input type="radio"/>
Gateway celebrates neighborhood character and history	<input type="radio"/>	<input type="radio"/>

1. Are there other **strengths** of the concept? (please specify)

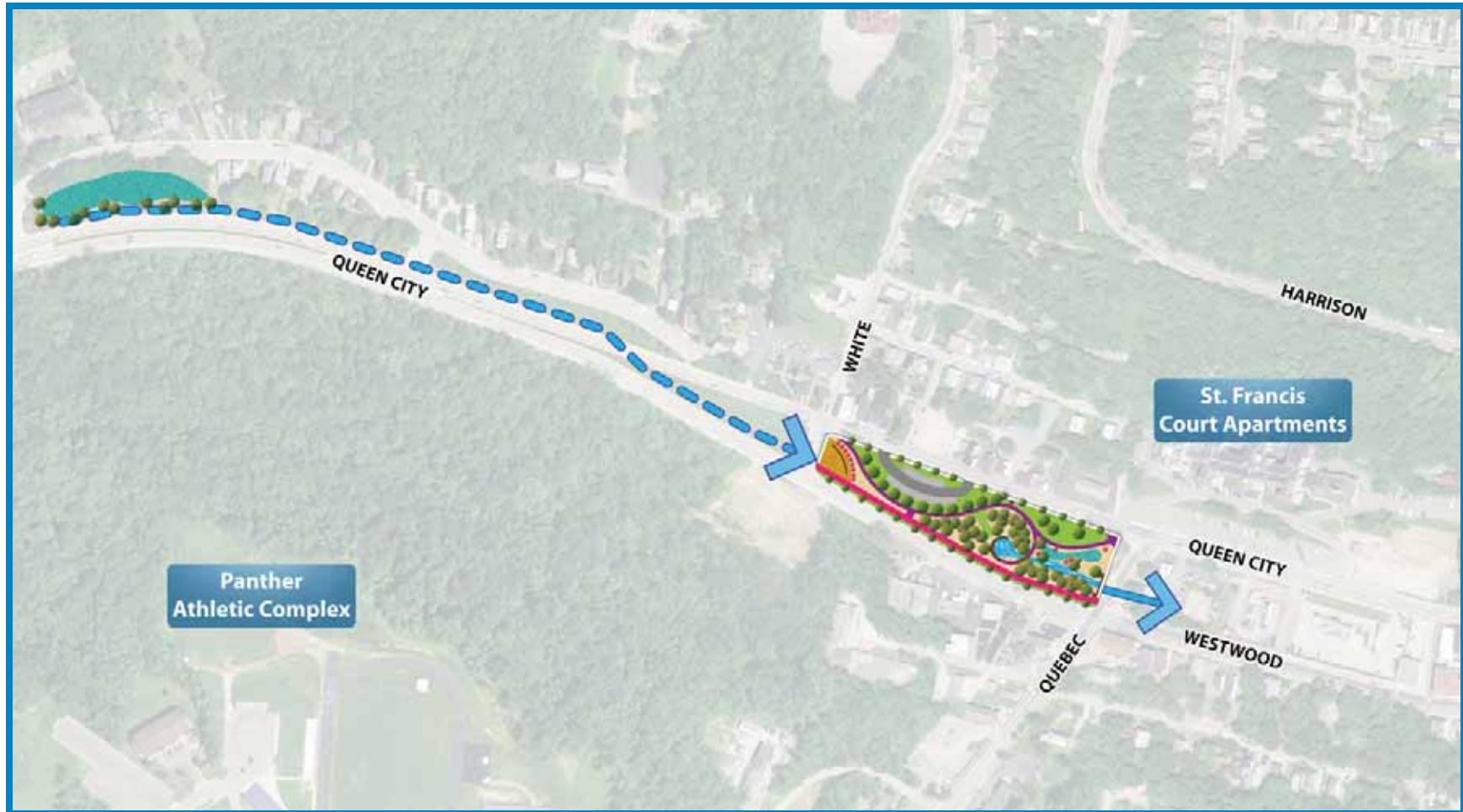
2. Are there other **weaknesses** of the concept? (please specify)





WESTERN GATEWAY ZONE Beginning the Urban Waterway

These handouts were developed by the Metropolitan Sewer District of Greater Cincinnati (MSD) as part of small group sessions at the Lick Run Community Design Workshop #2 on October 26, 2011 in Cincinnati, Ohio. Participants were asked to review these handouts and to identify the perceived strengths and weaknesses of the draft design concepts and planning guidelines as presented. The feedback gathered from the workshop participants will be combined with technical evaluations to develop a Lick Run Master Plan that will define potential short- and long-term solutions for reducing combined sewer overflows (CSOs) from the Lick Run watershed into the Mill Creek.





NARROW CHANNEL ZONE Concept 1: Waterside Pedestrian Walkway

These handouts were developed by the Metropolitan Sewer District of Greater Cincinnati (MSD) as part of small group sessions at the Lick Run Community Design Workshop #2 on October 26, 2011 in Cincinnati, Ohio. Participants were asked to review these handouts and to identify the perceived strengths and weaknesses of the draft design concepts and planning guidelines as presented. The feedback gathered from the workshop participants will be combined with technical evaluations to develop a Lick Run Master Plan that will define potential short- and long-term solutions for reducing combined sewer overflows (CSOs) from the Lick Run watershed into the Mill Creek.

Concept Description

	<u>Strength</u>	<u>Weakness</u>
Narrow waterway with retaining walls on both sides	<input type="radio"/>	<input type="radio"/>
Pedestrian walkway, with overlooks and seating, on north side	<input type="radio"/>	<input type="radio"/>
Multipurpose trail on south side	<input type="radio"/>	<input type="radio"/>
Green infrastructure features integrated into surface parking lots	<input type="radio"/>	<input type="radio"/>
In-stream features (e.g., pools, riffles) to improve water quality	<input type="radio"/>	<input type="radio"/>
Opportunities for residential/business development	<input type="radio"/>	<input type="radio"/>

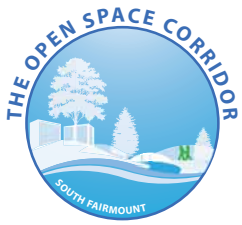
Community Goals (preferences from Community Design Workshop #1)

	<u>Strength</u>	<u>Weakness</u>
Waterway with natural stone and vegetation	<input type="radio"/>	<input type="radio"/>
Multipurpose trail	<input type="radio"/>	<input type="radio"/>
Gathering places and pedestrian walkways	<input type="radio"/>	<input type="radio"/>
Off-street surface parking lots	<input type="radio"/>	<input type="radio"/>
Green infrastructure features integrated into surface parking lots	<input type="radio"/>	<input type="radio"/>

1. Are there other **strengths** of the concept? (please specify)

2. Are there other **weaknesses** of the concept? (please specify)





NARROW CHANNEL ZONE Concept 1: Waterside Pedestrian Walkway

These handouts were developed by the Metropolitan Sewer District of Greater Cincinnati (MSD) as part of small group sessions at the Lick Run Community Design Workshop #2 on October 26, 2011 in Cincinnati, Ohio. Participants were asked to review these handouts and to identify the perceived strengths and weaknesses of the draft design concepts and planning guidelines as presented. The feedback gathered from the workshop participants will be combined with technical evaluations to develop a Lick Run Master Plan that will define potential short- and long-term solutions for reducing combined sewer overflows (CSOs) from the Lick Run watershed into the Mill Creek.





NARROW CHANNEL ZONE Concept 2: Waterside Overlooks

These handouts were developed by the Metropolitan Sewer District of Greater Cincinnati (MSD) as part of small group sessions at the Lick Run Community Design Workshop #2 on October 26, 2011 in Cincinnati, Ohio. Participants were asked to review these handouts and to identify the perceived strengths and weaknesses of the draft design concepts and planning guidelines as presented. The feedback gathered from the workshop participants will be combined with technical evaluations to develop a Lick Run Master Plan that will define potential short- and long-term solutions for reducing combined sewer overflows (CSOs) from the Lick Run watershed into the Mill Creek.

Concept Description

Narrow waterway with retaining walls on both sides

Strength

Weakness

Community Goals (preferences from Community Design Workshop #1)

Strength

Weakness

Overlooks to waterway located near surface parking lots/civic spaces

Multipurpose trail

Multipurpose trail only on south side

Gathering places and pedestrian walkways

In-stream features (e.g., pools, riffles) to improve water quality

Off-street surface parking lots

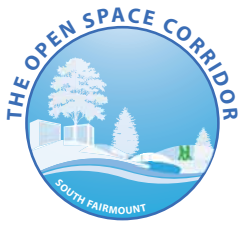
Opportunities for residential/business development

Green infrastructure features integrated into surface parking lots

1. Are there other **strengths** of the concept? (please specify)

2. Are there other **weaknesses** of the concept? (please specify)





NARROW CHANNEL ZONE Concept 2: Waterside Overlooks

These handouts were developed by the Metropolitan Sewer District of Greater Cincinnati (MSD) as part of small group sessions at the Lick Run Community Design Workshop #2 on October 26, 2011 in Cincinnati, Ohio. Participants were asked to review these handouts and to identify the perceived strengths and weaknesses of the draft design concepts and planning guidelines as presented. The feedback gathered from the workshop participants will be combined with technical evaluations to develop a Lick Run Master Plan that will define potential short- and long-term solutions for reducing combined sewer overflows (CSOs) from the Lick Run watershed into the Mill Creek.





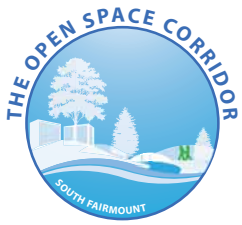
NARROW CHANNEL ZONE Concept 3: Community Park

These handouts were developed by the Metropolitan Sewer District of Greater Cincinnati (MSD) as part of small group sessions at the Lick Run Community Design Workshop #2 on October 26, 2011 in Cincinnati, Ohio. Participants were asked to review these handouts and to identify the perceived strengths and weaknesses of the draft design concepts and planning guidelines as presented. The feedback gathered from the workshop participants will be combined with technical evaluations to develop a Lick Run Master Plan that will define potential short- and long-term solutions for reducing combined sewer overflows (CSOs) from the Lick Run watershed into the Mill Creek.

Concept Description	Strength	Weakness	Community Goals (preferences from Community Design Workshop #1)	Strength	Weakness
Narrow waterway with retaining walls, terraces, water overlooks	<input type="radio"/>	<input type="radio"/>	Waterway with natural stone and vegetation	<input type="radio"/>	<input type="radio"/>
Emphasis on public amenities <i>Examples: farmers market, community gardens, educational gardens, dog park, civic lawn, shelters, etc.</i>	<input type="radio"/>	<input type="radio"/>	Multipurpose trail	<input type="radio"/>	<input type="radio"/>
Multipurpose trail on south side of channel	<input type="radio"/>	<input type="radio"/>	Gathering places and pedestrian walkways	<input type="radio"/>	<input type="radio"/>
In-stream features (e.g., pools, riffles) to improve water quality	<input type="radio"/>	<input type="radio"/>	Integration of open space areas	<input type="radio"/>	<input type="radio"/>
			Off-street surface parking lots	<input type="radio"/>	<input type="radio"/>
			Green infrastructure features integrated into surface parking lots	<input type="radio"/>	<input type="radio"/>

1. Are there other **strengths** of the concept? (please specify)

2. Are there other **weaknesses** of the concept? (please specify)



NARROW CHANNEL ZONE Concept 3: Community Park

These handouts were developed by the Metropolitan Sewer District of Greater Cincinnati (MSD) as part of small group sessions at the Lick Run Community Design Workshop #2 on October 26, 2011 in Cincinnati, Ohio. Participants were asked to review these handouts and to identify the perceived strengths and weaknesses of the draft design concepts and planning guidelines as presented. The feedback gathered from the workshop participants will be combined with technical evaluations to develop a Lick Run Master Plan that will define potential short- and long-term solutions for reducing combined sewer overflows (CSOs) from the Lick Run watershed into the Mill Creek.





EASTERN GATEWAY ZONE Concept 1: Community Recreation and Open Space

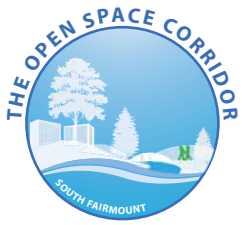
These handouts were developed by the Metropolitan Sewer District of Greater Cincinnati (MSD) as part of small group sessions at the Lick Run Community Design Workshop #2 on October 26, 2011 in Cincinnati, Ohio. Participants were asked to review these handouts and to identify the perceived strengths and weaknesses of the draft design concepts and planning guidelines as presented. The feedback gathered from the workshop participants will be combined with technical evaluations to develop a Lick Run Master Plan that will define potential short- and long-term solutions for reducing combined sewer overflows (CSOs) from the Lick Run watershed into the Mill Creek.

Concept Description

	<u>Strength</u>	<u>Weakness</u>	<u>Community Goals</u> (preferences from Community Design Workshop #1)	<u>Strength</u>	<u>Weakness</u>
Lake with shallow pool and a deeper second pool (for water quality)	<input type="radio"/>	<input type="radio"/>	Waterway with natural stone and vegetation	<input type="radio"/>	<input type="radio"/>
Mix of recreation facilities (active, passive, and civic open space)	<input type="radio"/>	<input type="radio"/>	Multipurpose trail	<input type="radio"/>	<input type="radio"/>
Multipurpose trail on north side of channel	<input type="radio"/>	<input type="radio"/>	Gathering places and pedestrian walkways	<input type="radio"/>	<input type="radio"/>
In-stream features (e.g., pools, riffles) to improve water quality	<input type="radio"/>	<input type="radio"/>	Relocated and enlarged baseball/soccer fields	<input type="radio"/>	<input type="radio"/>
Gathering places and pedestrian walkways	<input type="radio"/>	<input type="radio"/>	Large community open space for large events	<input type="radio"/>	<input type="radio"/>
Large community open space for large events	<input type="radio"/>	<input type="radio"/>			

1. Are there other **strengths** of the concept? (please specify)

2. Are there other **weaknesses** of the concept? (please specify)



EASTERN GATEWAY ZONE Concept 1: Community Recreation and Open Space

These handouts were developed by the Metropolitan Sewer District of Greater Cincinnati (MSD) as part of small group sessions at the Lick Run Community Design Workshop #2 on October 26, 2011 in Cincinnati, Ohio. Participants were asked to review these handouts and to identify the perceived strengths and weaknesses of the draft design concepts and planning guidelines as presented. The feedback gathered from the workshop participants will be combined with technical evaluations to develop a Lick Run Master Plan that will define potential short- and long-term solutions for reducing combined sewer overflows (CSOs) from the Lick Run watershed into the Mill Creek.





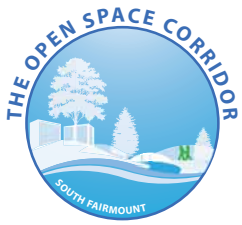
EASTERN GATEWAY ZONE Concept 2: Community Hub and Wetland

These handouts were developed by the Metropolitan Sewer District of Greater Cincinnati (MSD) as part of small group sessions at the Lick Run Community Design Workshop #2 on October 26, 2011 in Cincinnati, Ohio. Participants were asked to review these handouts and to identify the perceived strengths and weaknesses of the draft design concepts and planning guidelines as presented. The feedback gathered from the workshop participants will be combined with technical evaluations to develop a Lick Run Master Plan that will define potential short- and long-term solutions for reducing combined sewer overflows (CSOs) from the Lick Run watershed into the Mill Creek.

Concept Description	Strength	Weakness	Community Goals (preferences from Community Design Workshop #1)	Strength	Weakness
Variable waterway width with large wetland (for water quality)	<input type="radio"/>	<input type="radio"/>	Waterway with natural stone and vegetation	<input type="radio"/>	<input type="radio"/>
Enhanced recreation hub with pavilion, amphitheater, and amenities	<input type="radio"/>	<input type="radio"/>	Multipurpose trail	<input type="radio"/>	<input type="radio"/>
Multipurpose trail creates hard edge for north side of waterway	<input type="radio"/>	<input type="radio"/>	Waterway with a natural edge (south) and a hard edge (north)	<input type="radio"/>	<input type="radio"/>
Opportunities for future business development north of waterway	<input type="radio"/>	<input type="radio"/>	Gathering places and pedestrian walkways	<input type="radio"/>	<input type="radio"/>
In-stream features (e.g., pools, riffles) to improve water quality	<input type="radio"/>	<input type="radio"/>	Off-street surface parking lots	<input type="radio"/>	<input type="radio"/>
Potential for other neighborhood businesses/services	<input type="radio"/>	<input type="radio"/>	Defined/enhanced central core for neighborhood	<input type="radio"/>	<input type="radio"/>

1. Are there other **strengths** of the concept? (please specify)

2. Are there other **weaknesses** of the concept? (please specify)



EASTERN GATEWAY ZONE Concept 2: Community Hub and Wetland

These handouts were developed by the Metropolitan Sewer District of Greater Cincinnati (MSD) as part of small group sessions at the Lick Run Community Design Workshop #2 on October 26, 2011 in Cincinnati, Ohio. Participants were asked to review these handouts and to identify the perceived strengths and weaknesses of the draft design concepts and planning guidelines as presented. The feedback gathered from the workshop participants will be combined with technical evaluations to develop a Lick Run Master Plan that will define potential short- and long-term solutions for reducing combined sewer overflows (CSOs) from the Lick Run watershed into the Mill Creek.





EASTERN GATEWAY ZONE Concept 3: Small Lake & Braided Wetlands

These handouts were developed by the Metropolitan Sewer District of Greater Cincinnati (MSD) as part of small group sessions at the Lick Run Community Design Workshop #2 on October 26, 2011 in Cincinnati, Ohio. Participants were asked to review these handouts and to identify the perceived strengths and weaknesses of the draft design concepts and planning guidelines as presented. The feedback gathered from the workshop participants will be combined with technical evaluations to develop a Lick Run Master Plan that will define potential short- and long-term solutions for reducing combined sewer overflows (CSOs) from the Lick Run watershed into the Mill Creek.

Concept Description

	<u>Strength</u>	<u>Weakness</u>
Waterway widens to create small lake and braided wetlands	<input type="radio"/>	<input type="radio"/>
Multipurpose trail on north side of channel (crosses State Avenue with bridge)	<input type="radio"/>	<input type="radio"/>
Meadows surrounding natural-looking waterway	<input type="radio"/>	<input type="radio"/>
Large multipurpose lawn for civic events and recreation	<input type="radio"/>	<input type="radio"/>
In-stream features (e.g., pools, riffles) to improve water quality	<input type="radio"/>	<input type="radio"/>
Opportunities for future business development north of waterway	<input type="radio"/>	<input type="radio"/>

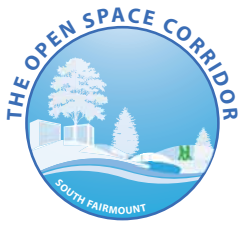
Community Goals (preferences from Community Design Workshop #1)

	<u>Strength</u>	<u>Weakness</u>
Waterway with natural stone and vegetation	<input type="radio"/>	<input type="radio"/>
Multipurpose trail	<input type="radio"/>	<input type="radio"/>
Gathering places and pedestrian walkways	<input type="radio"/>	<input type="radio"/>
Off-street surface parking lots	<input type="radio"/>	<input type="radio"/>

1. Are there other **strengths** of the concept? (please specify)

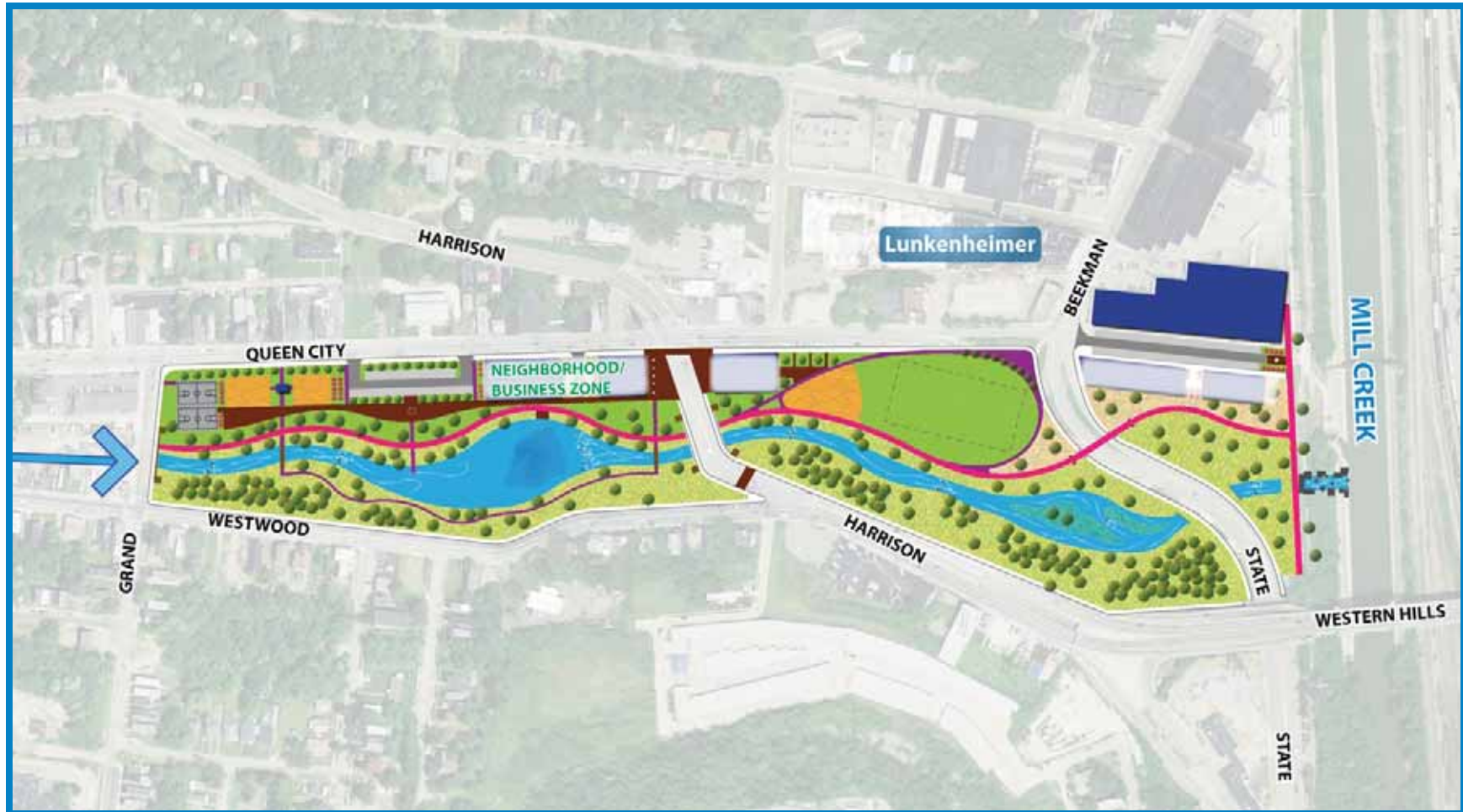
2. Are there other **weaknesses** of the concept? (please specify)





EASTERN GATEWAY ZONE Concept 3: Small Lake & Braided Wetlands

These handouts were developed by the Metropolitan Sewer District of Greater Cincinnati (MSD) as part of small group sessions at the Lick Run Community Design Workshop #2 on October 26, 2011 in Cincinnati, Ohio. Participants were asked to review these handouts and to identify the perceived strengths and weaknesses of the draft design concepts and planning guidelines as presented. The feedback gathered from the workshop participants will be combined with technical evaluations to develop a Lick Run Master Plan that will define potential short- and long-term solutions for reducing combined sewer overflows (CSOs) from the Lick Run watershed into the Mill Creek.



TRANSPORTATION NETWORK OPPORTUNITIES: QUEEN CITY AVENUE



These handouts were developed by the Metropolitan Sewer District of Greater Cincinnati (MSD) as part of small group sessions at the Lick Run Community Design Workshop #2 on October 26, 2011 in Cincinnati, Ohio. Participants were asked to review these handouts and to identify the perceived strengths and weaknesses of the draft design concepts and planning guidelines as presented. The feedback gathered from the workshop participants will be combined with technical evaluations to develop a Lick Run Master Plan that will define potential short- and long-term solutions for reducing combined sewer overflows (CSOs) from the Lick Run watershed into the Mill Creek.

Concept 1: Curb-to-Curb

1. What are the **strengths** of the concept? (please specify)

2. What are the **weaknesses** of the concept? (please specify)

Concept 2: Reduced Roadway Width

3. What are the **strengths** of the concept? (please specify)

4. What are the **weaknesses** of the concept? (please specify)

Concept 3: Local Two-Way Street

5. What are the **strengths** of the concept? (please specify)

6. What are the **weaknesses** of the concept? (please specify)



TRANSPORTATION NETWORK OPPORTUNITIES: WESTWOOD AVENUE



These handouts were developed by the Metropolitan Sewer District of Greater Cincinnati (MSD) as part of small group sessions at the Lick Run Community Design Workshop #2 on October 26, 2011 in Cincinnati, Ohio. Participants were asked to review these handouts and to identify the perceived strengths and weaknesses of the draft design concepts and planning guidelines as presented. The feedback gathered from the workshop participants will be combined with technical evaluations to develop a Lick Run Master Plan that will define potential short- and long-term solutions for reducing combined sewer overflows (CSOs) from the Lick Run watershed into the Mill Creek.

Concept 1: Curb-to-Curb

1. What are the **strengths** of the concept? (please specify)

2. What are the **weaknesses** of the concept? (please specify)

Concept 2: Reduced Roadway Width

3. What are the **strengths** of the concept? (please specify)

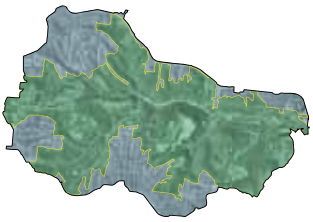
4. What are the **weaknesses** of the concept? (please specify)

Concept 3: Ecological Parkway (two-way traffic)

5. What are the **strengths** of the concept? (please specify)

6. What are the **weaknesses** of the concept? (please specify)





WATERSHED-WIDE OPPORTUNITIES

These handouts were developed by the Metropolitan Sewer District of Greater Cincinnati (MSD) as part of small group sessions at the Lick Run Community Design Workshop #2 on October 26, 2011 in Cincinnati, Ohio. Participants were asked to review these handouts and to identify the perceived strengths and weaknesses of the draft design concepts and planning guidelines as presented. The feedback gathered from the workshop participants will be combined with technical evaluations to develop a Lick Run Master Plan that will define potential short- and long-term solutions for reducing combined sewer overflows (CSOs) from the Lick Run watershed into the Mill Creek.

GREEN PLANNING PRINCIPLES

1. Do you support using **green planning principles** to help guide future infrastructure and revitalization efforts in the Lick Run Watershed? (choose one)

Yes **No** (If not, please explain why.)

2. Is there anything **missing** from the draft set of green planning principles? (choose one)

Yes **No** (If yes, please explain.)

TRAIL NETWORK OPPORTUNITIES

3. Do you support the concept of an **integrated network of trails** throughout the Lick Run Watershed? (choose one)

Yes **No** (If not, please explain why.)

4. Is there anything **missing** from the concept map showing potential trails in the Lick Run Watershed? (choose one)

Yes **No** (If yes, please explain.)

