

LICK RUN WATERSHED MASTER PLAN

Community Design Workshop #3

February 23, 2012

Tonight's Agenda

CSO Control Mandates: Lower Mill Creek

Summary of Community Engagement

Preliminary Lick Run Master Plan

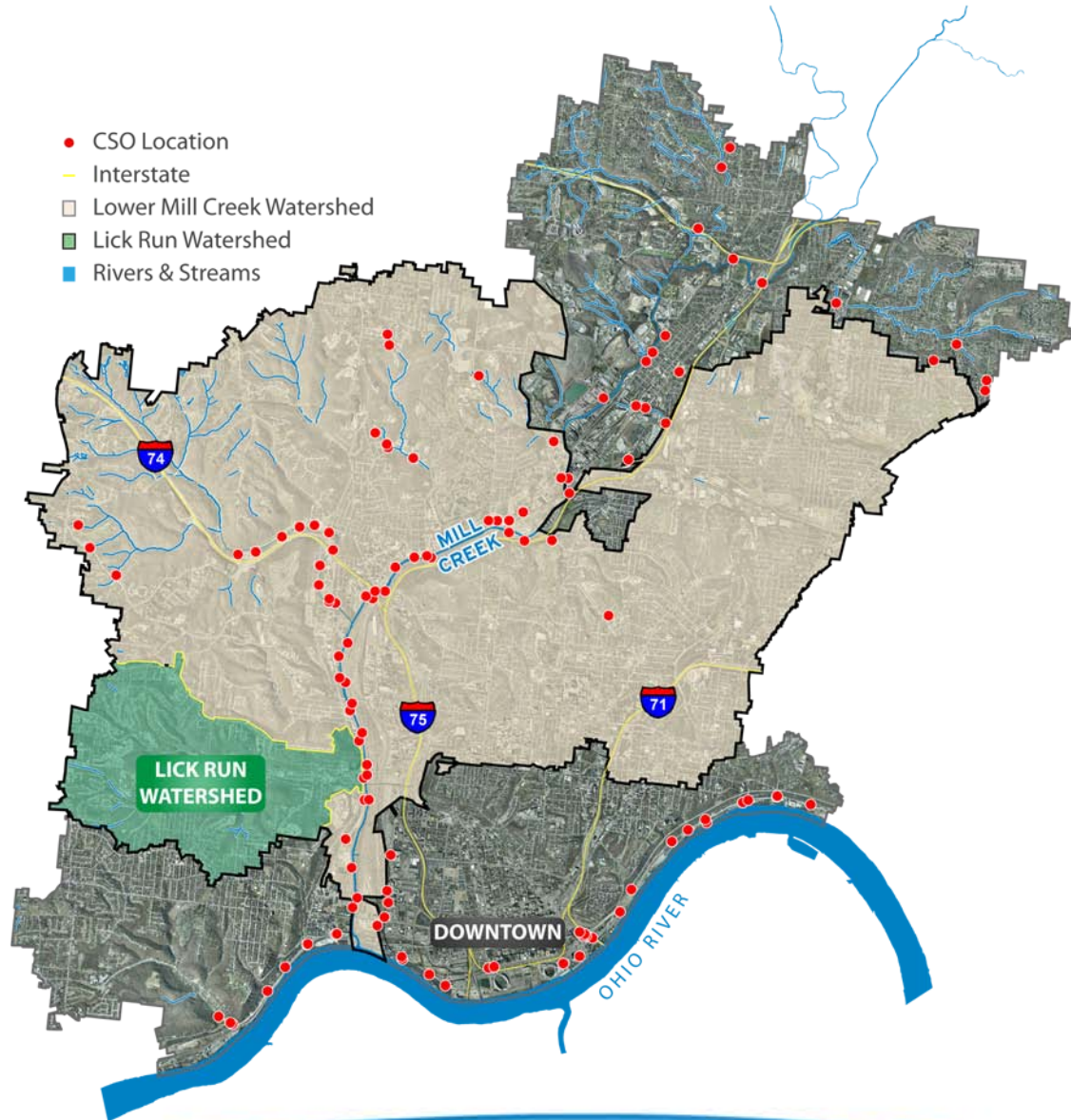
- Preliminary Urban Waterway Concept
- Question & Answer Opportunity
- Long-term Vision Plan

Breakout Sessions

- Review and discuss the Preliminary Urban Waterway Concept
- Review and discuss the Long-Term Vision Plan
- Identify gaps and potential refinements

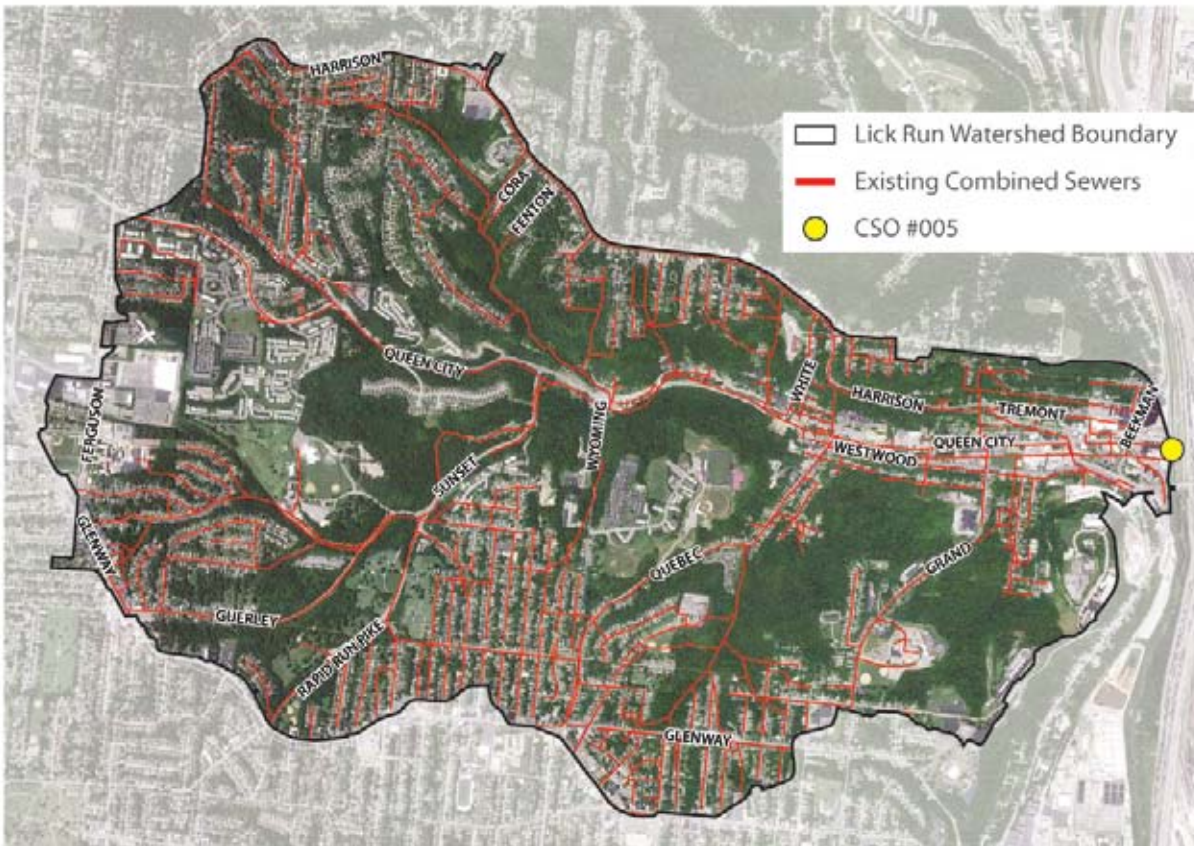
CSO Control Mandates: Lower Mill Creek

MSD is focusing on watersheds within the Lower Mill Creek that experience high volumes of CSOs.



CSO Control Mandates: Lower Mill Creek

The **Lick Run Watershed** contributes the largest volume of overflows from combined sewers of any watershed in Hamilton County.



CSO #005 during wet weather



CSO Control Mandates: Lower Mill Creek

Wet Weather Improvement Plan (WWIP) Submittal

Judge Approved Consent Decree

Phase II Plan Submittal

Phase I Complete



Revised WWIP Submittal

Reduction of **2 BG** of CSOs in Lower Mill Creek

DEFAULT SOLUTION

LOWER MILL CREEK PARTIAL REMEDY

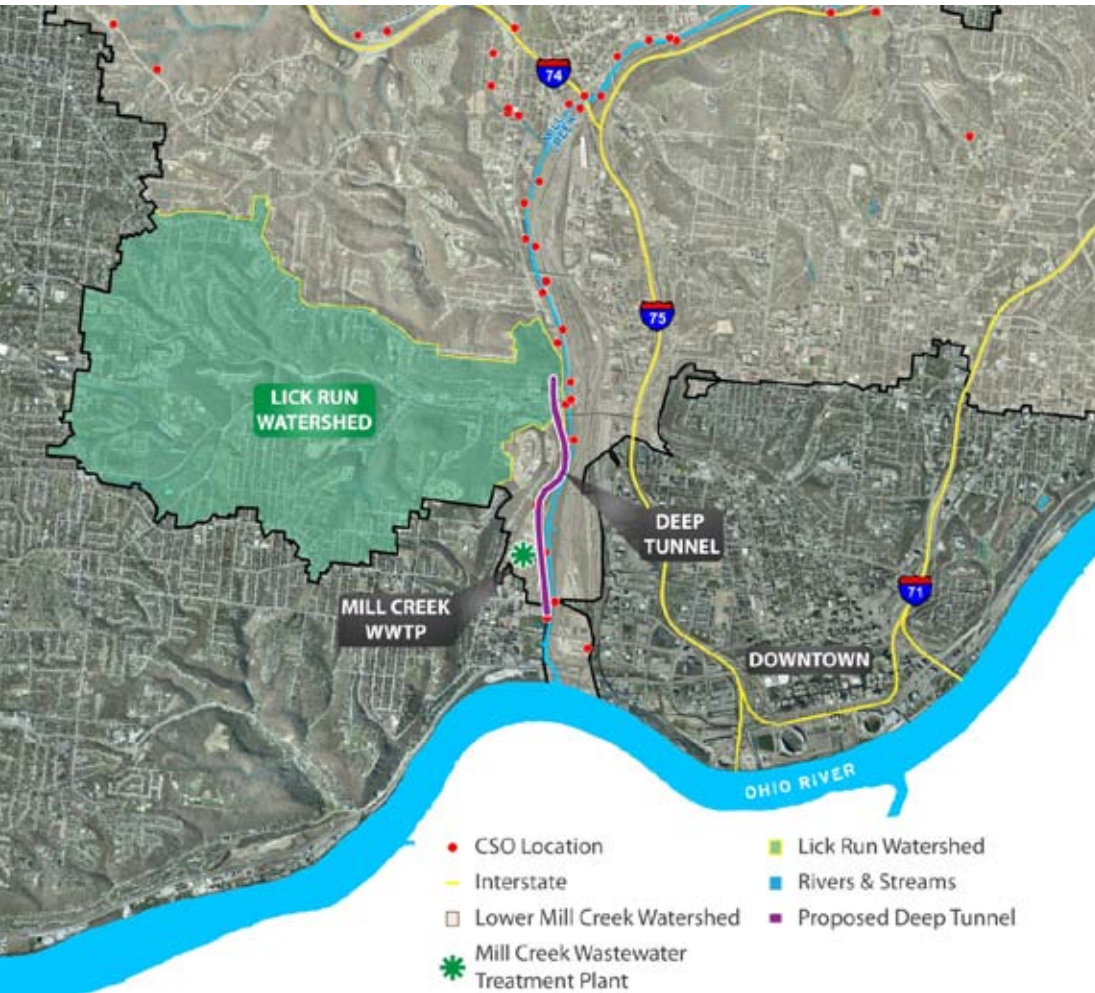
ALTERNATIVE SOLUTION

March 2012
Submit preliminary findings to the Hamilton County Board of County Commissioners

December 2012
Submit preferred plan for reduction of 2 billion gallons of CSOs in the Lower Mill Creek by 2018

“Default” Solution

The “default” solution specified in MSD’s Consent Decree is an underground storage tunnel parallel to Mill Creek.



Estimated cost (in 2006 dollars)

\$244 million

Costs will continue to be refined based on additional design and assessment



PROJECT GROUNDWORK

in Your Community



Clean Streams



Protecting the Environment

Partnering with our Communities

Revitalizing the Economy

Designing Innovative Solutions



Neighborhood Construction Projects



Strengthened Economy



Green Roofs



*Project Groundwork is your program.
It's an investment in your community for generations to come.*

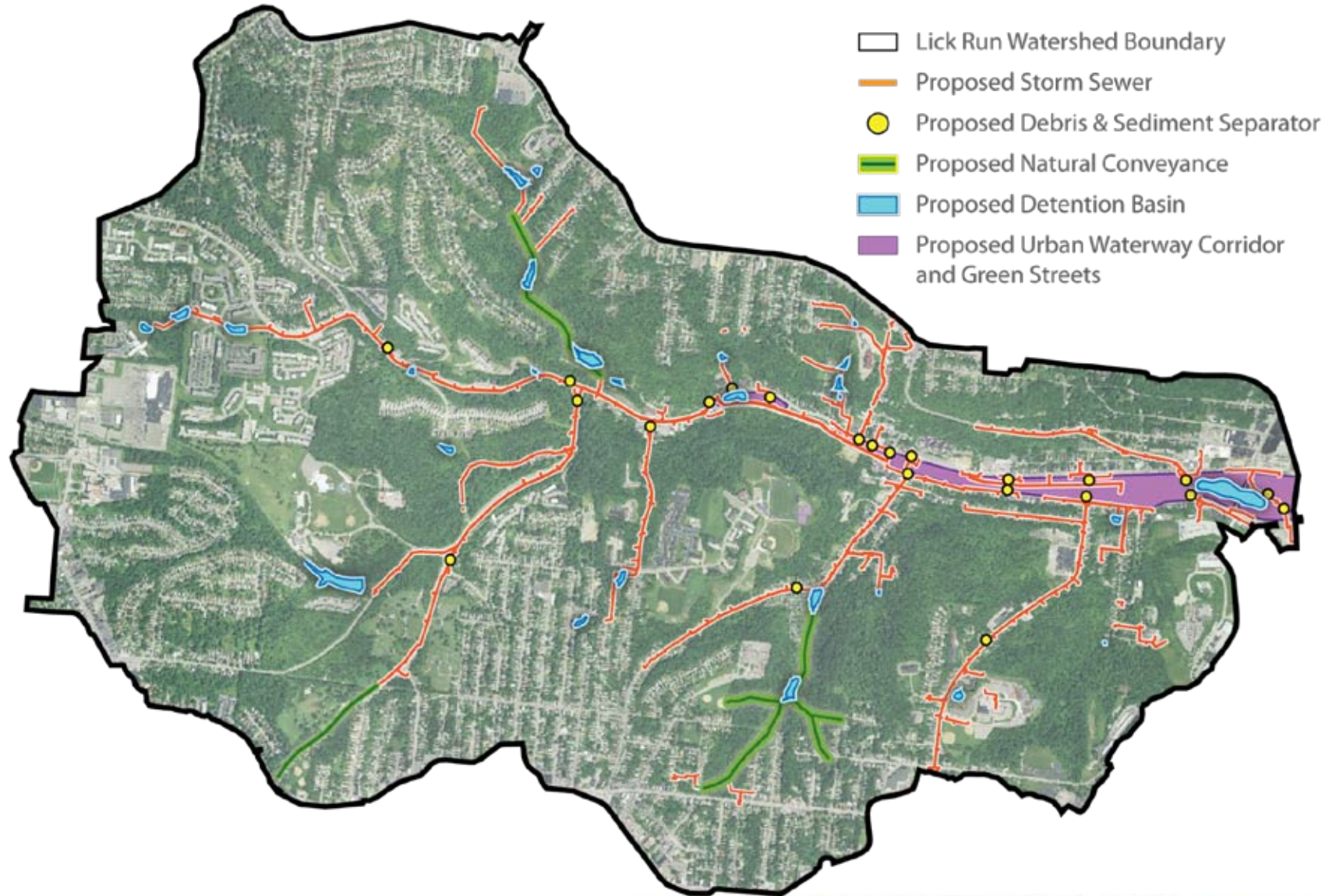
Presentation of the Preliminary Lick Run Master Plan

Alternative Solutions

MSD is partnering with local agencies and communities to create a more sustainable model for meeting CSO compliance mandates.



Alternative Solutions: Lick Run Alternative Project



Community Engagement Process



Community Engagement Process: CDW #1



What we learned from your input

- Character of the proposed urban waterway and open space network
- South Fairmount neighborhood business district (uses, character)
- Historic and cultural features
- Watershed planning guidelines

Community Engagement Process: CDW #2



Western Gateway Zone
1 Concept



Narrow Channel Zone
3 Concepts



Eastern Gateway Zone
3 Concepts

What we learned from your input

- Urban waterway that complements the urban environment
- In-stream water quality features and ecological benefits
- Opportunities for civic amenities (trails, gathering spaces, recreation)
- Opportunities for businesses and mixed-use areas
- Pedestrian safety improvements

Additional Community Input (South Fairmount Community Council)

South Fairmount Community

Needs

- 1 • Safe/Clean Green sustainable community
- Blight removal
- 1 • Business District for community residents
- Home ownership opportunities
- 2 • Jobs
- Transportation links
- Public areas
- Recreation
- Resource Center

Wants

- Viable housing stock
- Develop home sites
- Develop business sites
- 2 • Jobs
- Public areas
- Recreation
- Resource Center

Don't Want

- Wholesale removal of businesses anchored in community
- Loss of jobs for residents
- More than 5% assisted rental properties

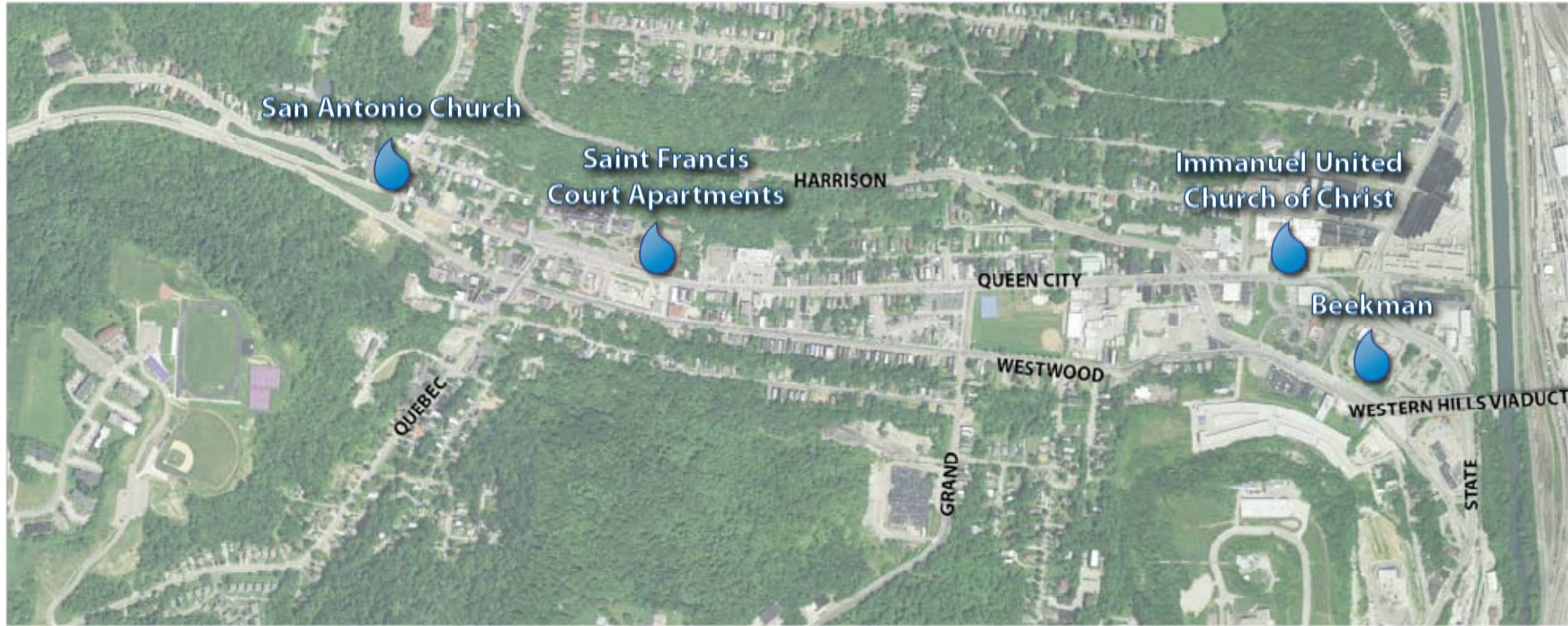
South Fairmount: Existing Conditions



Community-Identified Cultural & Historical Resources



Early Success Projects / Enabled Impact Projects



Preliminary Urban Waterway Concept



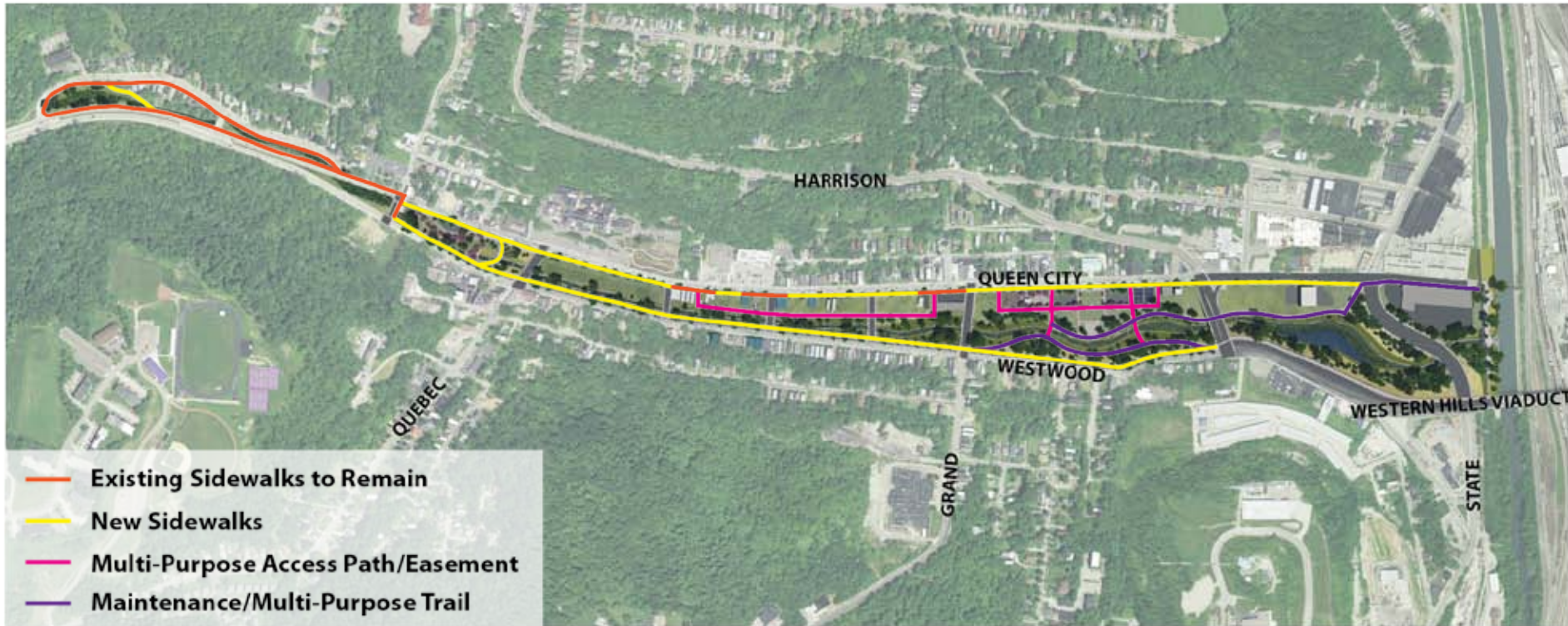
The Base Project

Urban Waterway Alignment & Water Quality Features



The Base Project

Maintenance Access, Sidewalks & Trails



The Base Project

Western Gateway Zone



Wetland Forebay
(for water quality)

**Bioswale/
Rain Gardens**

**Bioswale/
Rain Gardens**

Surface Parking
(Trail & Maintenance Access)

**Maintenance/
Multi-Purpose Trail**

**Waterway
Daylighting
Feature**

**Urban
Waterway
System**

 Existing Building

Western Gateway Zone Waterway Daylighting Feature



Looking north towards Queen City

Narrow Channel Zone



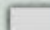
Green Street Features


Multi-Purpose Access Path with Overlooks
(future combined sewer easement)


Urban Waterway System

Maintenance/ Multi-Purpose Trail

Proposed Roadway or Pedestrian-Only Bridge

 Existing Building

 Potential to remain pending additional hydraulic and engineering design refinements

 Potential relocation pending partner funding identification and structural integrity of resources

Narrow Channel Zone Overlooks to Urban Waterway



Looking south towards Westwood Avenue

Civic Recreation Hub



Existing
Sprayground

Relocated
Playground

Recreation
Hub

Relocated
Basketball
Courts

Urban
Waterway
System

Maintenance/
Multi-Purpose Trail

Pedestrian
Bridges

Maintenance/
Multi-Purpose Trail

Existing Building

Potential to remain pending additional hydraulic and engineering design refinements

Civic Recreation Hub

Urban Waterway & Open Space Network



Looking north towards Queen City

Eastern Gateway Zone



Maintenance/
Multi-Purpose Trail

Open Space
Linkage with
Mill Creek

MILL CREEK

Waterway
Outfall
Feature

Urban
Waterway
System

Water Quality
Feature

Existing Building

Potential to remain pending additional hydraulic and engineering design refinements

Eastern Gateway Zone Water Quality Feature



Looking south towards Westwood

Questions from the Community

Implementation

Timeline

Costs

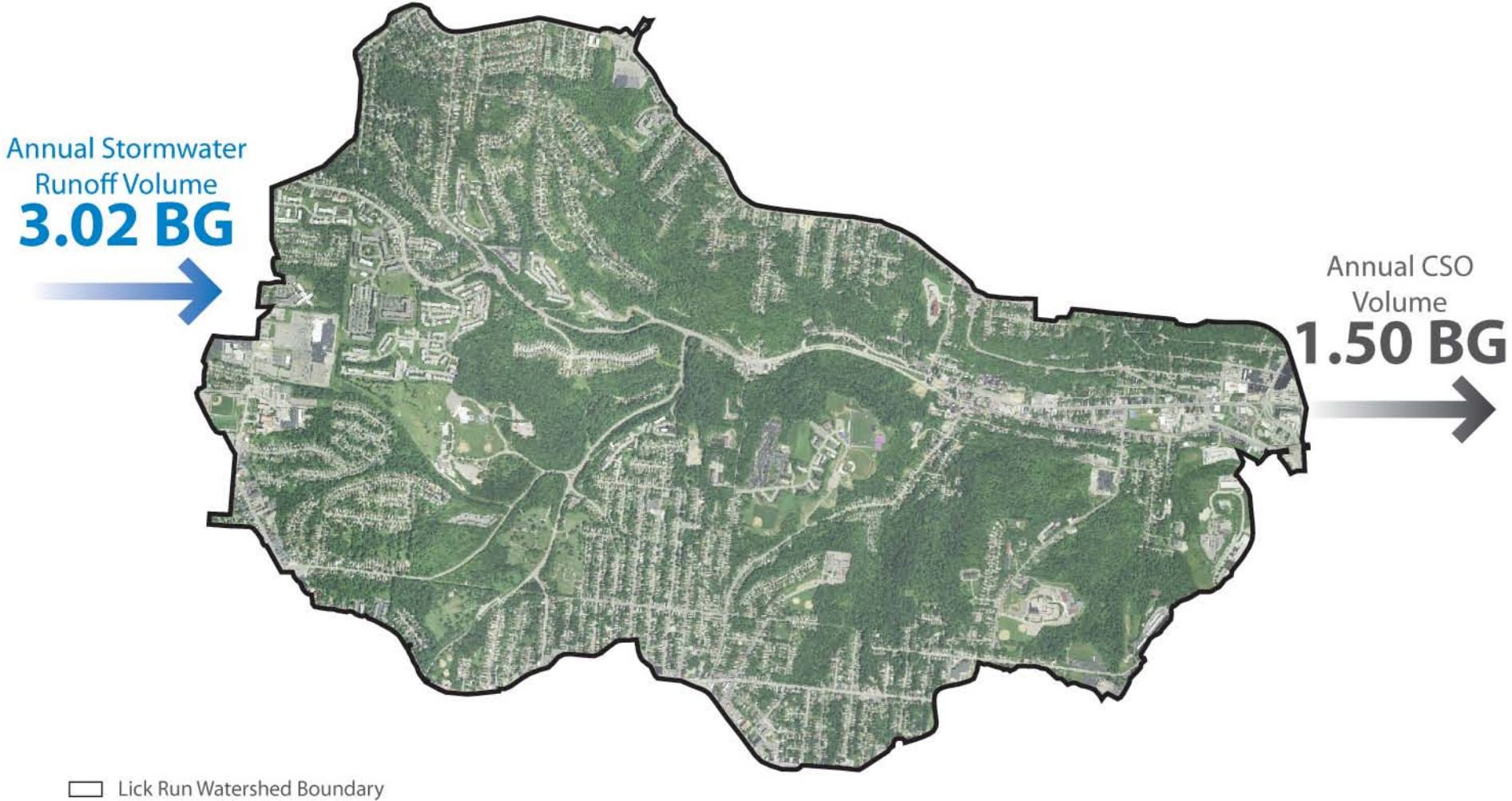


Impacts

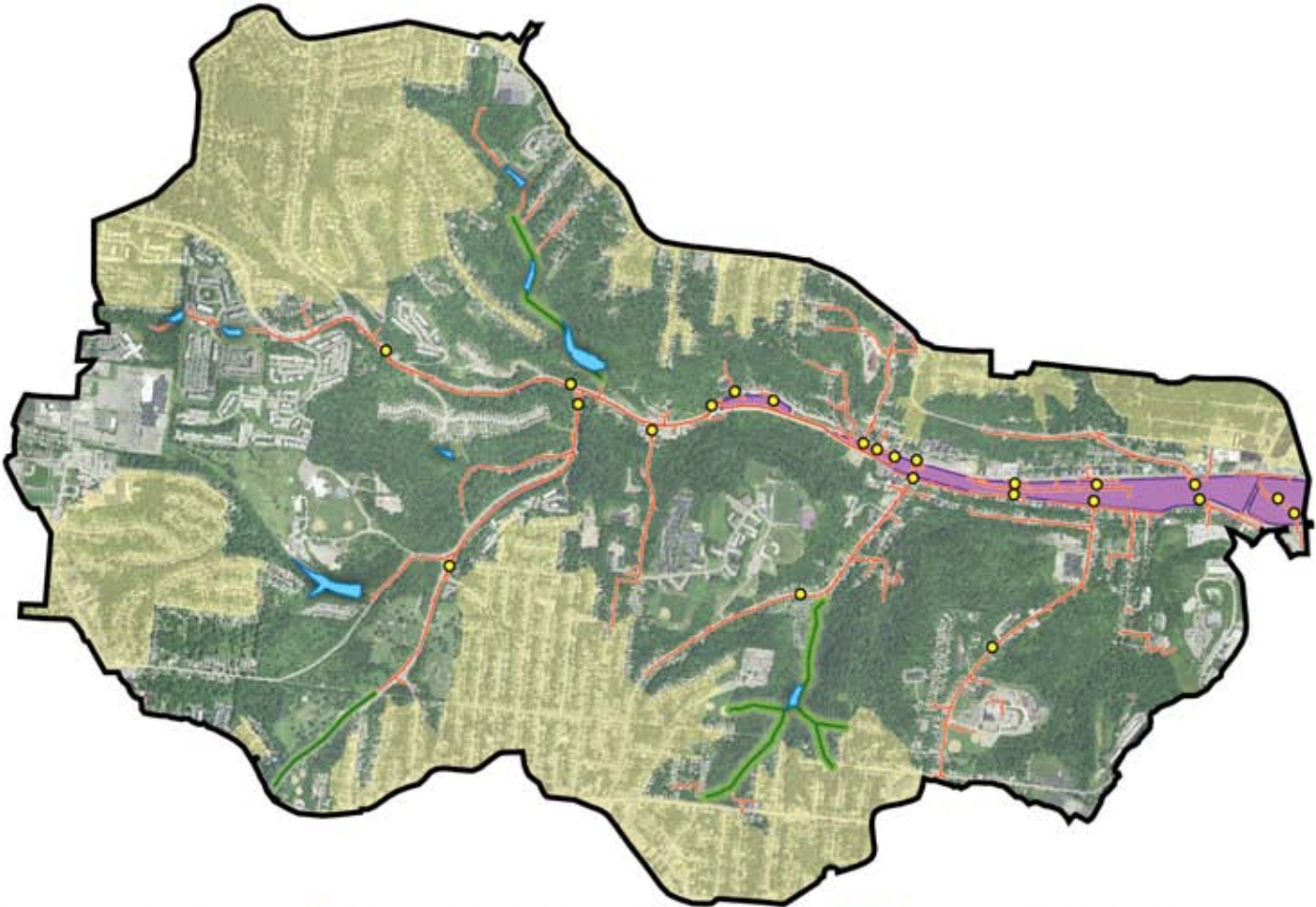
Community Goals

Maintenance

What options did MSD explore when developing the Lick Run Alternative Project?



What options did MSD explore when developing the Lick Run Alternative Project?



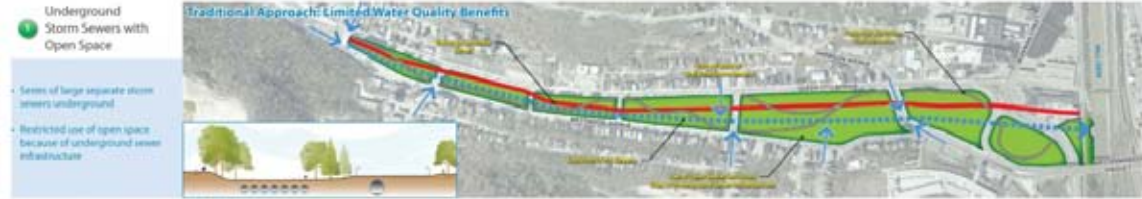
- Lick Run Watershed Boundary
- Proposed Debris & Sediment Separator
- Proposed Detention Basin
- Developed Ridgetops
- Proposed Natural Conveyance
- Proposed Urban Waterway Corridor
- Proposed Storm Sewer

How did MSD define the Urban Waterway Concept?

TRADITIONAL APPROACHES

Series of large underground storm sewers
Restricted use of open space

Uniform Surface Channel
Retaining walls and fencing



ALTERNATIVE APPROACHES

Urban Waterway System

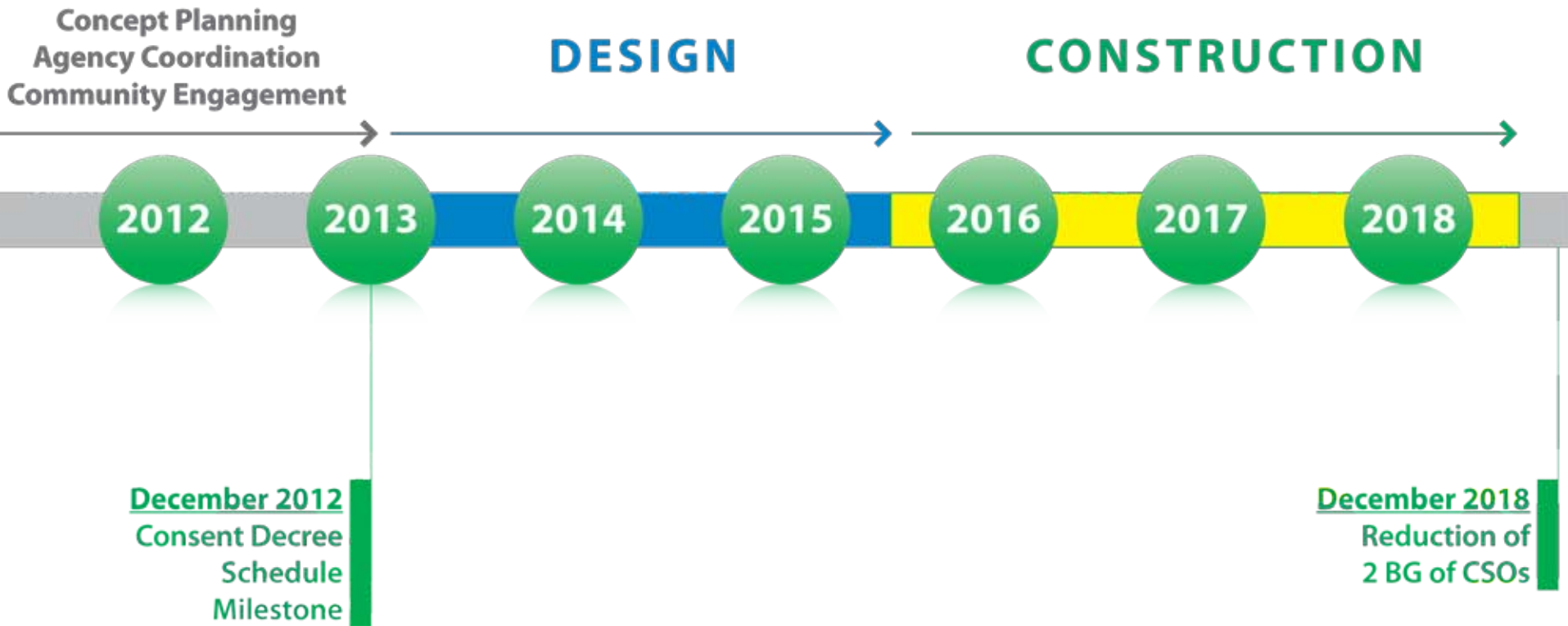
Underground storm sewer conveyance box
(minimizes risks to public safety)

Maximum water quality improvement



As shown at the Lick Run Community Open House (January 2011)

When would MSD construct the proposed project (if approved)?



What components of the project would be constructed by 2018?



Preliminary Urban Waterway Concept – The Base Project

What is the cost?

	DEFAULT SOLUTION: (DEEP TUNNEL)	LICK RUN ALTERNATIVE PROJECT
Capital Cost	\$\$\$\$	\$\$
Operations & Maintenance Costs	\$\$\$	\$
Economic Benefits	—	✓✓✓ ???

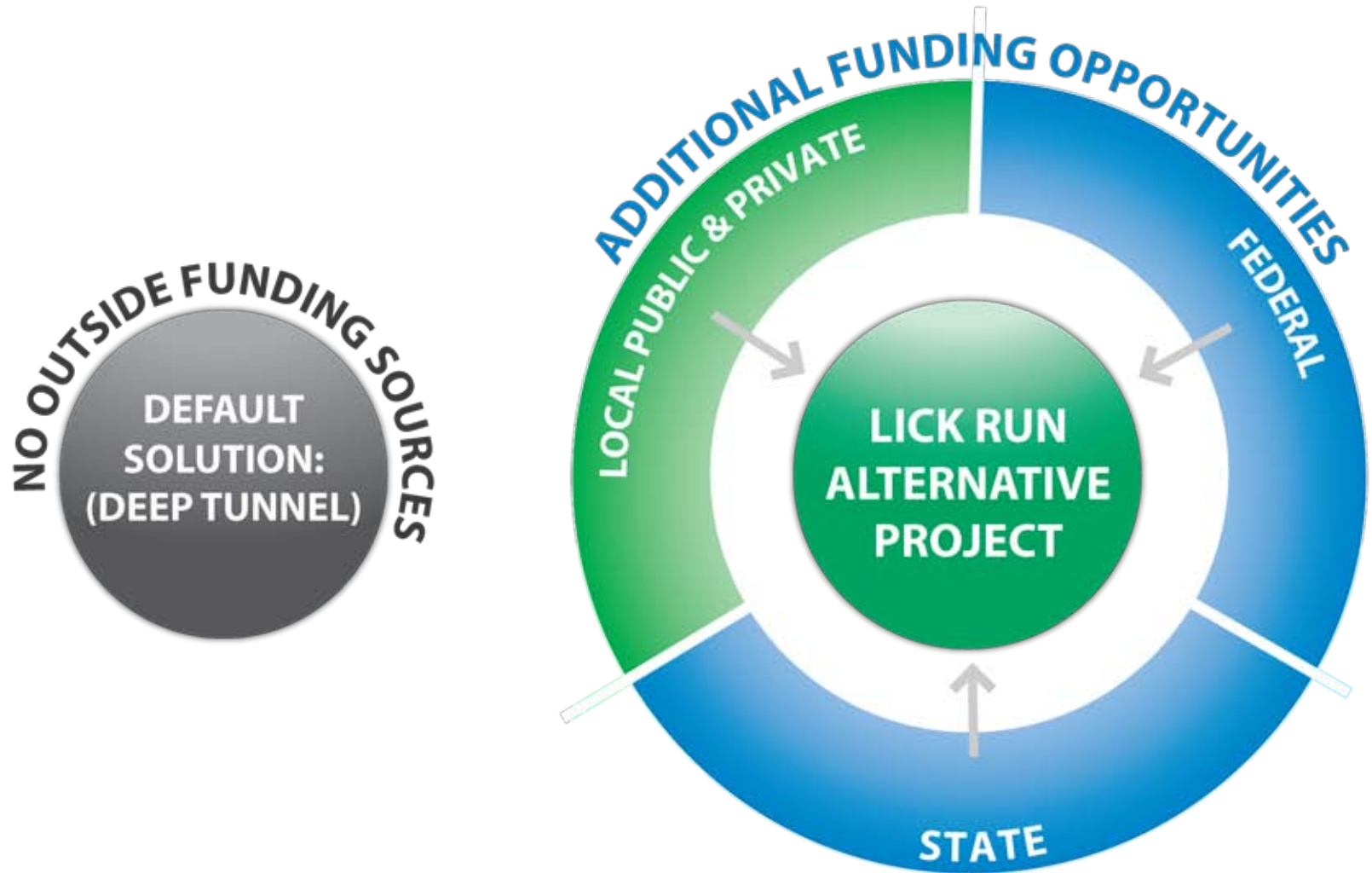
Who is paying for this project?



PROJECT GROUNDWORK
your pipeline to clean water

Project Groundwork is primarily funded by MSD customers (ratepayers) through monthly or quarterly sewer bills.

Who is paying for this project?



How is MSD addressing the maintenance needs of the proposed urban waterway and associated open space?



MSD is working closely with Cincinnati Parks and the Cincinnati Recreation Commission to plan for and provide maintenance needs through these public agencies.

What process is MSD using to acquire property?

PROPERTY APPRAISAL PROCESS

STATE-CERTIFIED
APPRAISERS

Under Ohio law, MSD must follow appraisal guidelines established in the **Uniform Standards of Professional Appraisal Practice (USPAP)**

PROPERTY ACQUISITION & RELOCATION PROCESS

MSD-MONITORED
RELOCATION
PERSONNEL

MSD is following guidelines established in the federal **Uniform Relocation Act (URA)** to determine relocation and business reestablishment compensation

What properties are currently publicly owned?



Publicly-owned property (City of Cincinnati and Hamilton County)

Hamilton County Auditor's Database
February 2012

How is MSD addressing the needs of local businesses in the planning process?

ONE-ON-ONE MEETINGS

Spring 2010 - Today

MSD met a number of local businesses to introduce Project Groundwork and the Lick Run Alternative Project

MSD continues one-on-one dialogue with local business owners

COMMUNITIES OF THE FUTURE ADVISORY COMMITTEE

March 2010 - Today

MSD gains community input on Project Groundwork through this advisory committee

CFAC includes members of the South Fairmount Business Association and Community Council

SOUTH FAIRMOUNT BUSINESS ASSOCIATION

July 2010 - Today

As invited, MSD has attended meetings of the SFBA, making presentations and directly responding to questions and concerns

MSD has met regularly with a core committee of members

MSD has held input sessions to review materials prior to and after Community Design Workshops

SURVEY OF BUSINESSES

January 2012

MSD conducted a survey of businesses, at the request of the SFBA

How is MSD addressing the needs of local businesses in the planning process?



Existing



Proposed

One-on-one discussions are critical for productive outcomes.

How does the Lick Run Master Plan affect other, complementary efforts?



Question & Answer Opportunity

The Base Project



How could MSD's investment support future public/private investments?



Preliminary urban waterway concept plan

How could MSD's investment support future public/private investments?



Preliminary Long-Term Vision Plan

How could MSD's investment support future public/private investments?



Transportation Network Improvements



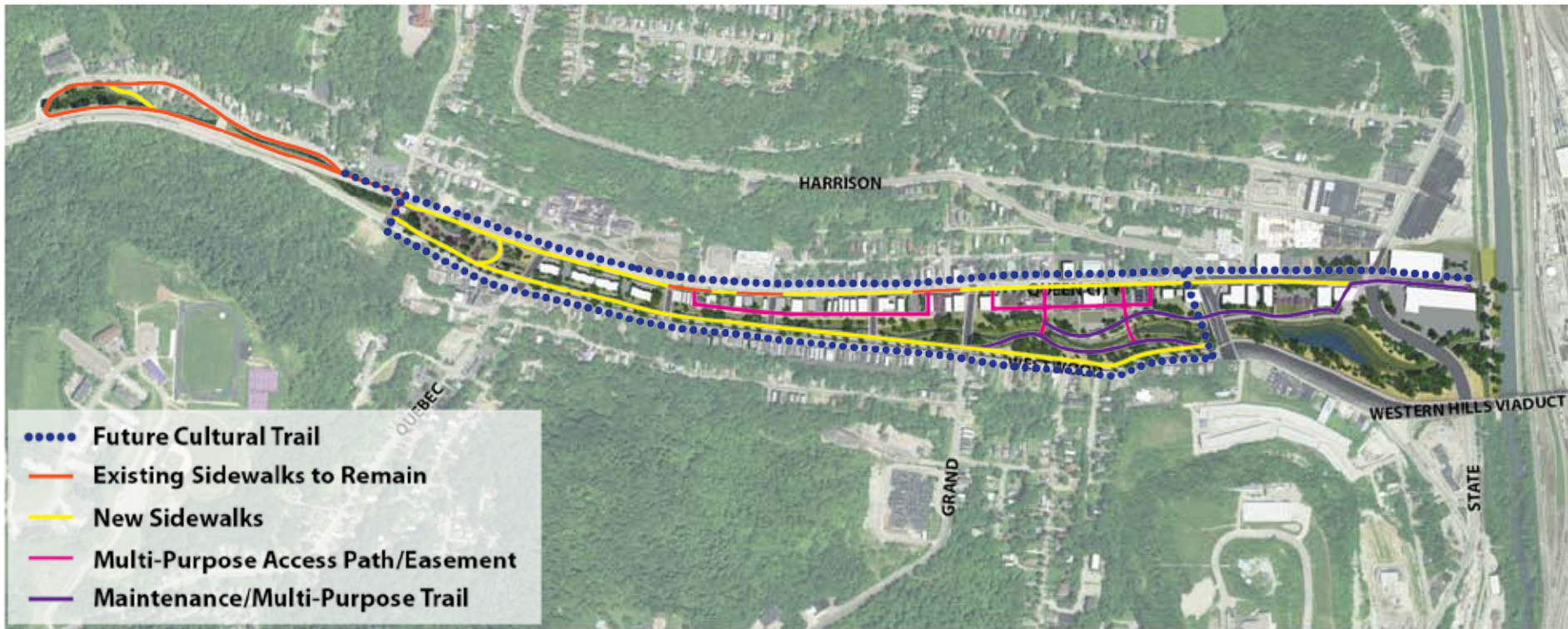
Westwood Avenue



Queen City Avenue



How could MSD's investment support future public/private investments?



Cultural Trail Concept

How could MSD's investment support future public/private investments?



Neighborhood District Concept

The Base Project

