

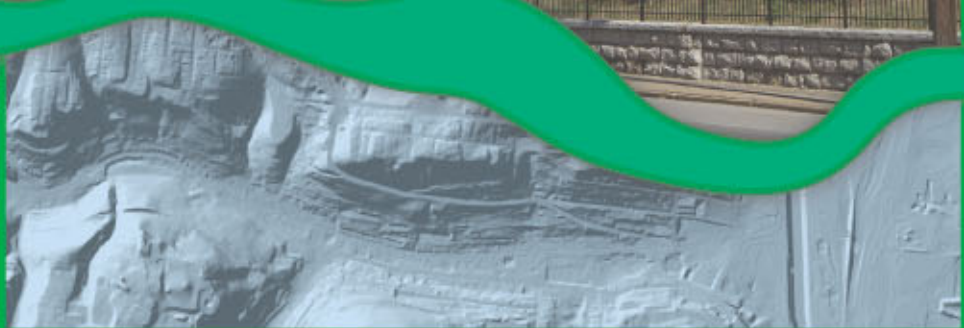
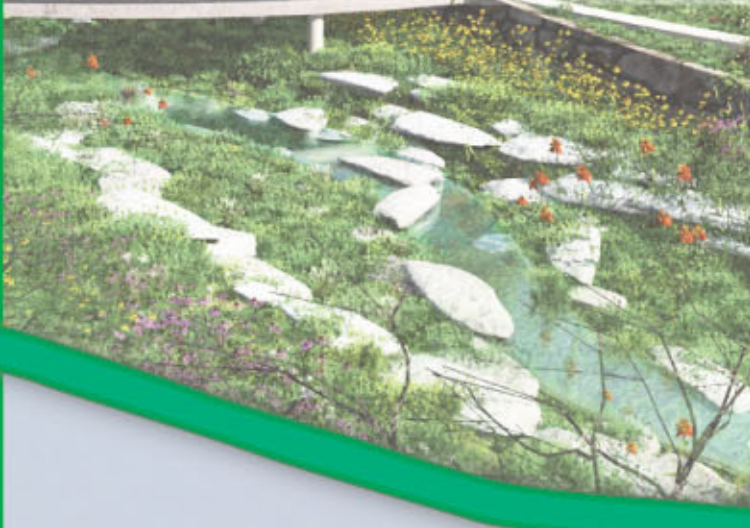


Implementing the Vision of the Lick Run Watershed Master Plan

Supplement to the May 2012 Master Plan



August 2013



Background

In a letter dated May 30, 2013, MSD received official approval from the U.S. Environmental Protection Agency (EPA) for its Revised Original Lower Mill Creek Partial Remedy (LMCPR). This followed the endorsement of City of Cincinnati and Hamilton County officials in late 2012. The LMCPR includes projects in the watersheds of Kings Run, Bloody Run, West Fork, and Lick Run that will achieve a collective 1.78 billion gallon reduction in combined sewer overflows (CSOs) by 2018 at a cost of \$244 million (2006 dollars).

The approval of the LMCPR signals the successful culmination of over three years of technical evaluation and community outreach work that was needed to develop a sustainable, watershed-based approach to managing CSOs and related stormwater issues in the Lower Mill Creek. However, as this important milestone is achieved, more work is needed in the months ahead to implement the LMCPR and to realize the projected environmental and community benefits.

The development of the Lick Run Watershed Master Plan was an integral step in the formulation of the LMCPR, and the projects the Master Plan describes are critical to the LMCPR's overall success. The suite of projects planned for Lick Run account for over seventy-five percent of the estimated capital cost of the LMCPR, and they will be responsible for nearly sixty percent of the total CSO reductions¹.

Modifications to Master Plan Elements

Since May of 2012, progress has been made in the design of the Lick Run Urban Waterway project, and ongoing coordination efforts with the South Fairmount Community Council and City departments such as the Cincinnati Department of Transportation & Engineering (CDOTE) have helped to refine some of the Master Plan's proposed elements. The series of figures to follow highlight the known modifications at this time that can be made to some of the central concepts presented in the original Master Plan.

Modifications were made to the following figures:

- Lick Run Alternative Project: The Comprehensive Vision for CSO Reduction²
- Project Timeline³
- Preliminary Urban Waterway Plan⁴
- Preliminary Long-Term Vision Plan⁵

Additional content included in this supplement include:

- Preliminary Long-Term Transportation Vision Plan
- Progress on Key Recommendations

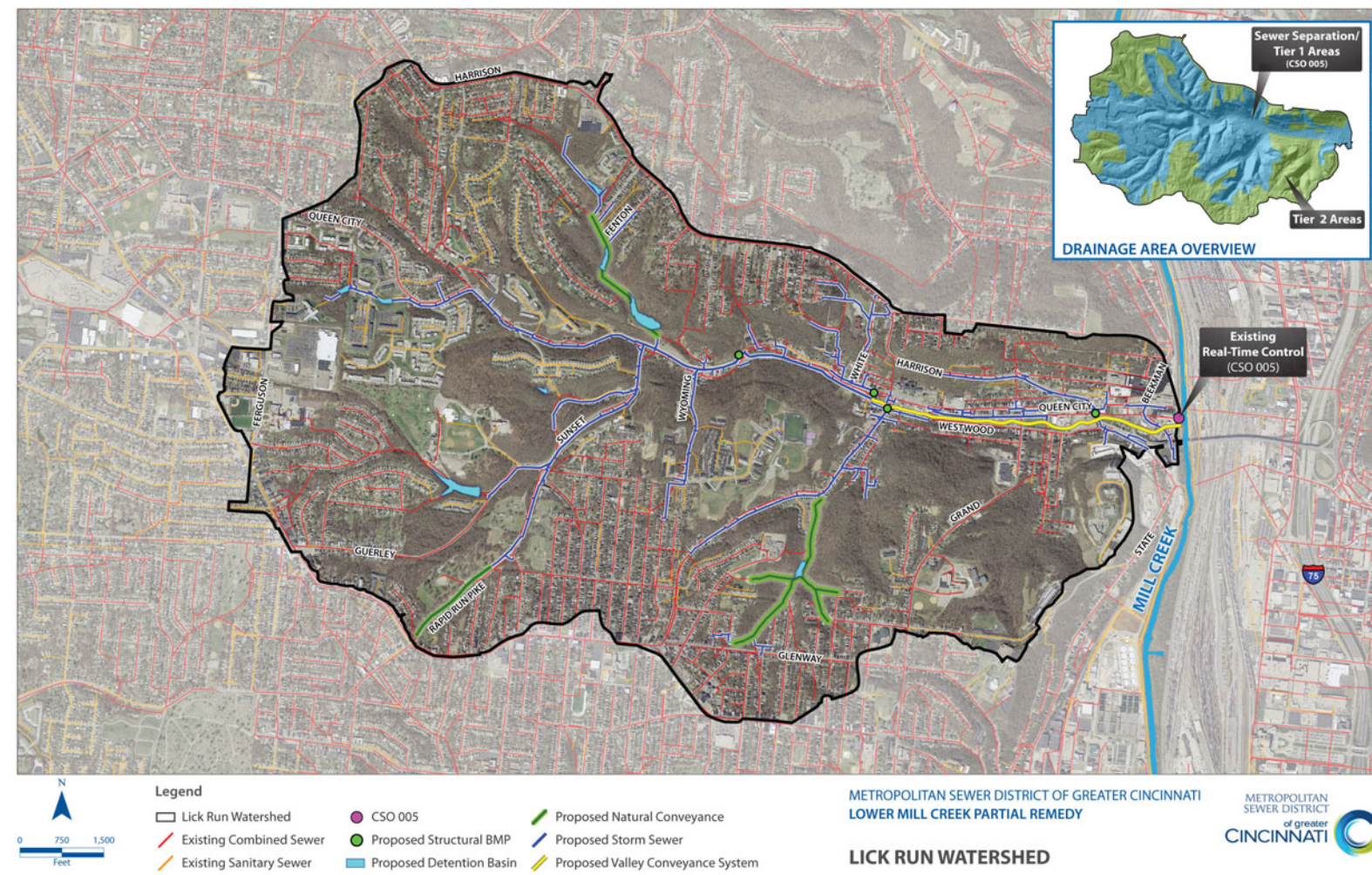
The Lick Run Alternative Project (Updated)

An overview map was presented in the original Master Plan that showed the series of proposed projects throughout the Lick Run watershed, including sewer separation projects leading down the hillsides to the central Valley Conveyance corridor. Further analysis and design revealed that planned sewer separations along Grand Avenue and Westwood Avenue were not required at this time to achieve the CSO volume reduction goal for Phase 1. The location and number of structural BMPs that were originally proposed have also been refined through advances in the project's design. These changes are reflected in the updated watershed map, below.

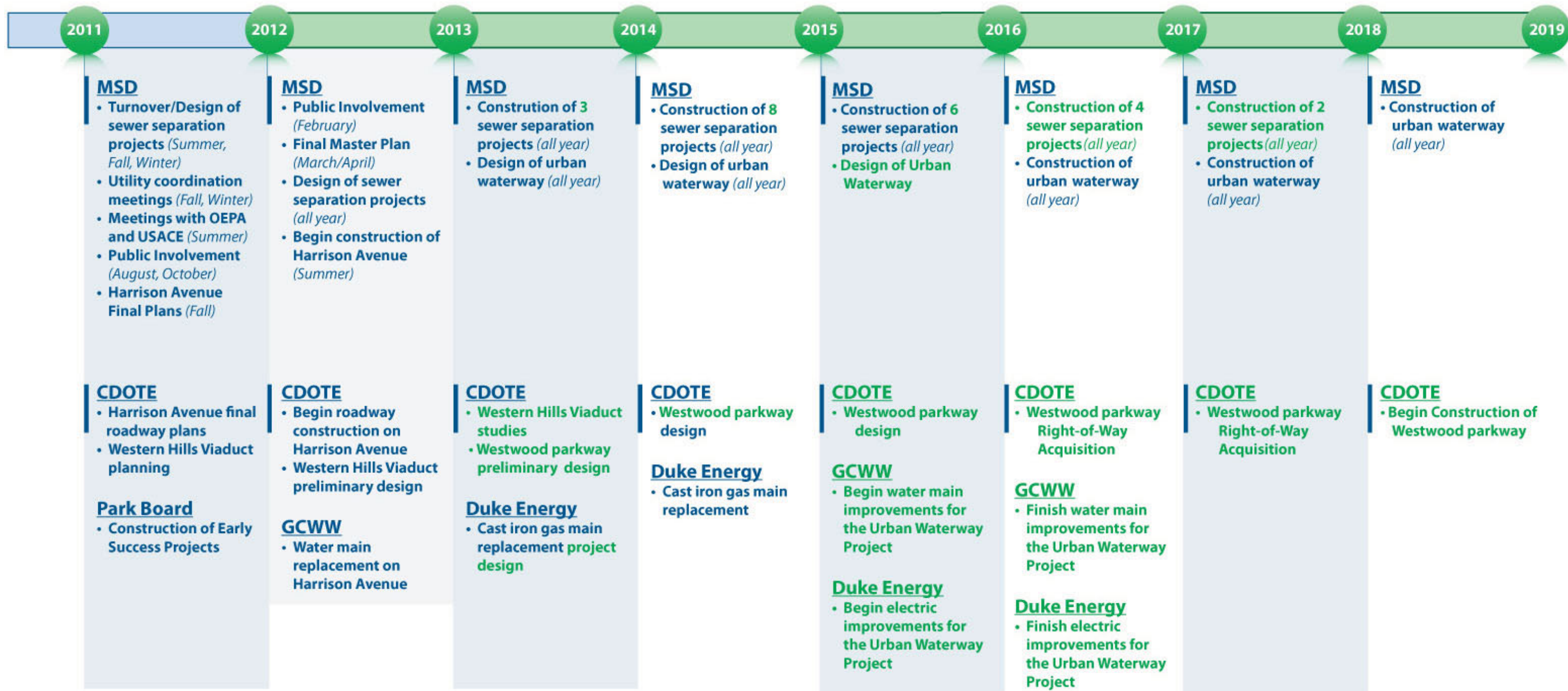
What's Included

This document serves to update some of the details included in the original published Lick Run Master Plan (May 2012), including certain project overview maps and slight modifications to the project timeline. It also includes an update on the progress made toward achieving some of the near-term and long-term key recommendations proposed in the original Master Plan.

This update report is not intended as a stand-alone document and should be viewed in conjunction with the complete original Lick Run Master Plan. Any figures or text in this report that modify or amend sections of the original Master Plan language or visuals will be called out as needed.



¹ See Table 6-8 of LMCPR Study Report, December 18, 2012; ² See Master Plan (May 2012) p. 4-2; ³ See Master Plan (May 2012) p. 5-6; ⁴ See Master Plan (May 2012) p. 4-4; ⁵ See Master Plan (May 2012) p. 4-27



Timeline for Implementation of the Lick Run Alternative Project This timeline serves as general guidance for outlining components of the Lick Run Alternative Project and corresponding dates for implementation. This schedule is subject to change based on further refinement and coordination. Revisions to the Master Plan Schedule (May 2012) have been highlighted in green font.

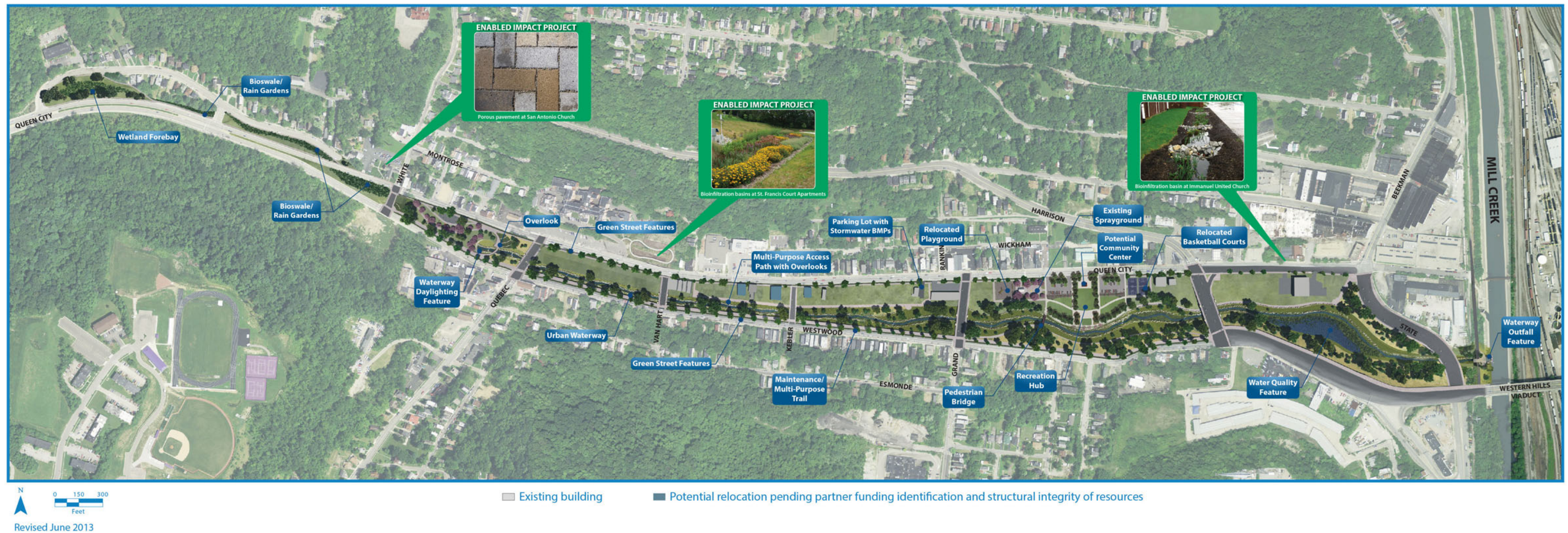
Preliminary Urban Waterway Plan (Updated) & Long-Term Vision Plan (Updated)

Two of the maps included in the original Master Plan were updated, and an additional map was added. The updated version of the original Preliminary Urban Waterway Plan⁶ and the Long-Term Vision Plan⁷ are included below and on the following pages, as is the new Preliminary Long-Term Transportation Vision Plan.

Changes to the previously-existing, Preliminary Urban Waterway Plan include:

- Removed a proposed additional cross street between Kebler and Grand Avenue based on coordination with and feedback from CDOTE on ideal traffic patterns
- Updated map legend to more accurately describe elements shown and corrected colors shown for various buildings based on impact and use
- Removed areas that displayed improvements that are not included in project footprint
- Relocated low flow channel outfall to Mill Creek further south
- Removed pedestrian bridge based on scope refinement to further reduce costs of the MSD wet weather project
- Other minor aesthetic changes

PRELIMINARY URBAN WATERWAY PLAN



⁶ See Master Plan (May 2012) p. 3-12; ⁷ See Master Plan (May 2012) p. 5-4

Changes to the previously-existing, Preliminary Long-Term Vision Plan include:

- Retained all buildings currently planned to be un-impacted by the project
- Removed a proposed additional cross street between Kebler and Grand Avenue
- Updated map legend to more accurately describe elements shown and corrected colors shown for various buildings based on impact and use
- Removed areas that displayed improvements that are not included in project footprint
- Relocated low flow channel outfall to Mill Creek further south
- Removed pedestrian bridge
- Other minor aesthetic changes

PRELIMINARY LONG-TERM VISION PLAN



Revised June 2013

- Existing building
- Potential future building redevelopment
- Proposed Low Flow Channel

Preliminary Long-Term Transportation Vision Plan

The new Preliminary Long-Term Transportation Vision Plan is simply the updated Preliminary Long-Term Vision Plan with details overlaid concerning proposed future improvements to Westwood and Queen City Avenues by CDOTE. The right-of-way acquisition activities will be partially paid for by a \$6 million grant CDOTE received in 2012 from the Ohio-Kentucky-Indiana Regional Council of Governments.

The dimensions shown in the original, conceptual-level cross sections showing improvements on Queen City Avenue and Westwood Avenue were revised to more accurately reflect planned improvements. These planned improvements are currently being evaluated and are subject to change by CDOTE. MSD continues to coordinate closely with CDOTE on the design work in the corridor.

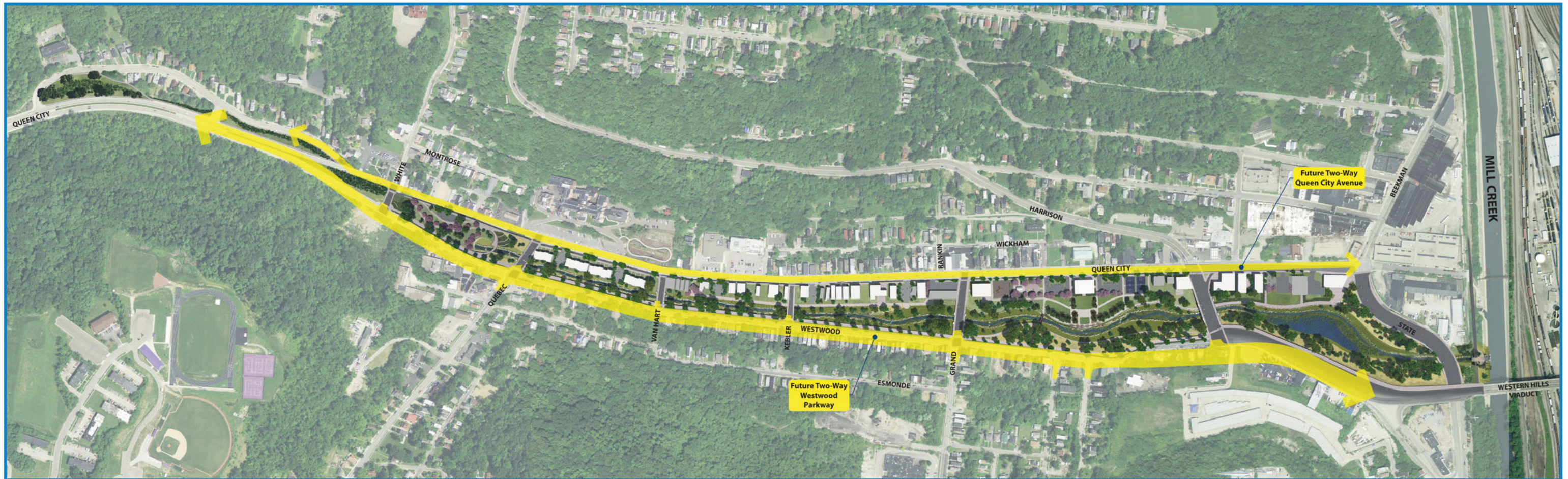
Queen City Avenue: *Two-Way Street Concept*



Westwood Avenue: *Two-Way Parkway Concept*



PRELIMINARY LONG-TERM TRANSPORTATION VISION PLAN



Revised August 2013

Existing building Potential future building redevelopment

Progress on Key Recommendations

Recommendations were provided in the original Master Plan on near-term (up to MSD's Consent Decree milestone in 2018) and the long-term (five, 10, 20, or more years) activities. These recommendations are important to meeting the urban waterway project's schedule, ensuring the urban waterway's longevity, and sustaining the influx of energy for area revitalization after the MSD's projects have been completed.

Many of both the near-term and long-term recommendations are already underway, and others will be addressed in the coming months. Two examples of recommendations already being addressed are described below.

Introducing Form-Based Code in South Fairmount

- The Cincinnati Department of City Planning & Buildings has agreed to work with neighborhood residents and stakeholders to create a Form-Based Code for South Fairmount that will add to and build on the input already received during the Lick Run Community Design Workshops held by MSD in 2011 and 2012.
- City Planning staff will hold a series of meetings in the fall of 2013 to reintroduce the residents to Form-Based Code, and to work collaboratively with them to ensure that the proposed Form-Based Code will be consistent with the vision as expressed in the Lick Run Master Plan.
- It is anticipated that City Planning staff will be ready to present the Form-Based Code map to Planning Commission for approval by November of 2013, and that it will be brought to City Council for approval before the end of December, 2013.

Investigate Impact Mitigation Alternatives for Historic and Cultural Resources

- MSD will continue to work with community and regional stakeholders to develop a mitigation plan that will describe alternative strategies to mitigate impacts to "Recommended Eligible" properties impacted by the Valley Conveyance System.
- A component of the mitigation plan will include the identification of potential funding sources.
- It is anticipated that the mitigation plan will be finalized by the end of December, 2013.

Development of New Recommendations

As the project design has advanced since May of 2012, some new near-term and long-term recommendations have been identified that will create additional benefits for MSD and the community.

Salvage and Recycle Materials from Buildings to be Demolished

- Efforts are underway as the first phase of demolition occurs in the Valley Conveyance corridor to reduce the amount of demolition debris sent to landfills by salvaging reusable building components and raw materials, and recycling materials if possible.
- MSD has coordinated with Region 5 of the U.S. EPA to incorporate more sustainable practices into MSD's standard demolition specifications.

Develop an Action and Communication Plan for the Queen City & Cora Sewer Separation Area

- There is a need to mitigate destructive activities such as ATV use and illegal dumping in the project area so that future water quality performance is assured and maintenance frequency can be minimized.

Coordinate with City Departments to Develop Stream Buffer Ordinance

- MSD will continue to provide feedback and coordinate with the City Planning Department and the City's floodplain manager on the creation of a stream buffer ordinance for the City of Cincinnati so that the design of Valley Conveyance System is adequately accommodated.

"This plan is good news for the residents of Cincinnati and for communities along the Ohio River...Not only will this innovative plan ensure that significant volumes of polluted stormwater and raw sewage are kept out of local waterways, but it will also cost less than more traditional approaches, saving money for ratepayers and the city."

Cynthia Giles, Assistant Administrator for EPA's Office of Enforcement and Compliance Assurance, speaking about MSD's Lower Mill Creek Partial Remedy.

