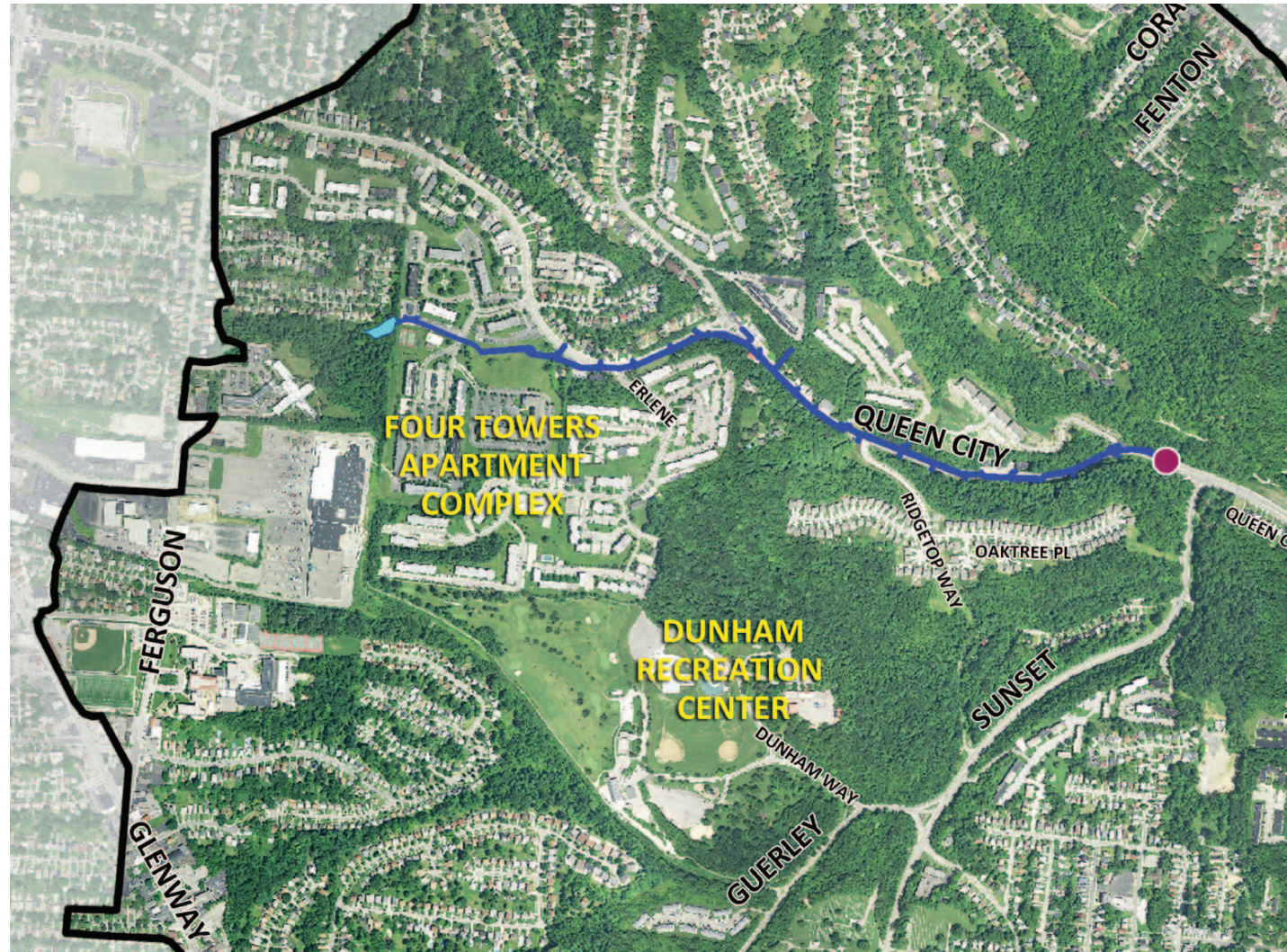


QUEEN CITY AVENUE, PHASE 2

Anticipated Construction: Winter (Feb.) 2015 - Summer 2016



Project Description: Installation of approximately 6,000 linear feet of stormwater sewer and 1,500 feet of combined sewer along the northern side of Queen City Avenue from Sunset Avenue to an apartment complex off of East Tower Drive. An existing stormwater detention basin will be upgraded.

QUEEN CITY AVENUE, PHASE 1

Under Construction

Anticipated Construction: Fall 2013 - Fall 2014



Project Description: Installation of approximately 3,900 linear feet of stormwater sewers between the Queen City Bypass and Sunset Avenue. Additional stormwater sewers will be installed along Tillie Avenue and Champlain Street with short legs on Wyoming and Sunset avenues.



PROJECT GROUNDWORK
your pipeline to clean water

METROPOLITAN
SEWER DISTRICT
of greater
CINCINNATI

