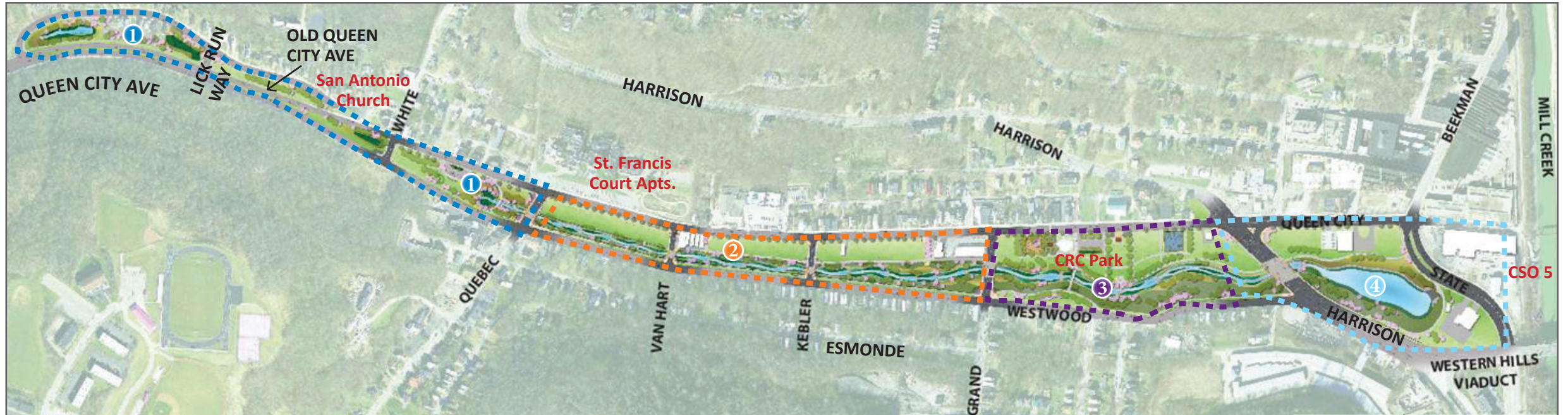


Lick Run Greenway

The central element of MSD's Lick Run Project is the Lick Run Greenway that will convey stormwater and natural drainage from the watershed to the Mill Creek.

The Greenway will be located in the Cincinnati neighborhood of South Fairmount from old Queen City Avenue to the Mill Creek between Queen City and Westwood avenues.

The Greenway includes a wetland forebay and bioinfiltration basins at old Queen City Avenue, a mile-long urban waterway (constructed channel that mimics a natural stream) from the headwaters area near White Street to the pond area east of Harrison Avenue, and a 1.5-mile underground stormwater conveyance system from old Queen City Avenue to the outfall at Mill Creek, among other elements.



1 Western Gateway Zone

Includes a wetland forebay and bioinfiltration basins at old Queen City Avenue and a headwaters area east of White Street where the urban waterway begins and flows east.



2 Narrow Channel Zone



Includes a narrow urban waterway from Quebec Avenue to Grand Avenue.

3 Civic Recreation Space

Includes a wider, meandering urban waterway from Grand Avenue to Harrison Avenue and improved civic recreation space.



4 Eastern Gateway Area



Includes a pond east of Harrison Ave. The pond overflows to an underground stormwater conveyance box that flows into the Mill Creek. The pond discharges to the Mill Creek through an outfall pipe.

Based on 90% design of Lick Run Greenway, June 2016