

OVERVIEW OF LICK RUN PROJECT



Watershed Boundary
Sediment and Debris Separator

Pond

Detention Feature

Storm Sewer

Natural Conveyance

Urban Waterway

Sanitary Sewer

Lick Run Project
Early Success Project
SMU Project

1 Harrison Avenue Phase A

Completed in Fall 2013. New storm sewers along Harrison Avenue. Coordinated with Cincinnati Department of Transportation & Engineering (CDOTE) road work. A curbside bumpout planter at Tremont Street was installed in Spring 2014.

2 Rapid Run Park

Completed in Fall 2014. First green project completed in Lick Run. Bioswale at Rapid Run Park, two small bioretention basins and new storm sewers. MSD partnered with Cincinnati Park Board.

3 Harrison Avenue Phase B

Completed in Spring 2015. New storm sewers along Harrison Avenue, Moelling Avenue and Beekman Street near the Western Hills Viaduct.

4 Queen City Avenue Phase 1

Completed in Spring 2015. New storm sewers along Queen City Avenue from the Bypass to Sunset Avenue and along Tillie/Champlain.

Early Success Projects

- A San Antonio Church**
Permeable pavers and four small bioinfiltration basins (rain gardens) were installed in 2011.
- B St. Francis Court Apartments**
Two unused parking lots were converted to bioinfiltration basins (rain gardens) in 2010.
- C Immanuel United Church**
A bioinfiltration basin (rain garden) was installed in 2010.
- D Roberts Academy**
Retrofit of an existing stormwater detention basin and five new bioinfiltration basins installed in 2014.

Guerley Road Detention Dam

Completed in Summer 2014. Large stormwater detention dam off Guerley Road. This project will help reduce street flooding and CSOs.

12 Quebec Road

New storm sewers along Quebec Road and multiple adjacent streets. Construction: Summer 2017 - Summer 2018.

11 Lick Run Greenway

Stormwater conveyance system with an urban waterway and underground stormwater conveyance box. Construction: Fall 2016 - Winter (Dec) 2018 (substantially complete).

10 Queen City and Cora Avenues

Starting this Fall. Restoration of a stream in a ravine behind the Judson Care Center that was enclosed in a combined sewer, retrofit of three existing stormwater detention basins and new storm sewer along Fenton Avenue and at bottom of ravine. Construction: Fall 2016 - Fall 2017.

9 Quebec Heights

Starting this Fall. Restoration of a stream in Glenway Woods that was enclosed in a combined sewer, retrofit of one existing stormwater detention basin and new storm sewer. Partnering with Cincinnati Parks. Construction: Fall 2016 - Fall 2017.

8 Wyoming & Minion Avenues

Starting this Fall. New storm sewers along Wyoming Avenue and multiple adjacent streets. Construction: Fall 2016 - Fall 2017.

6 White Street

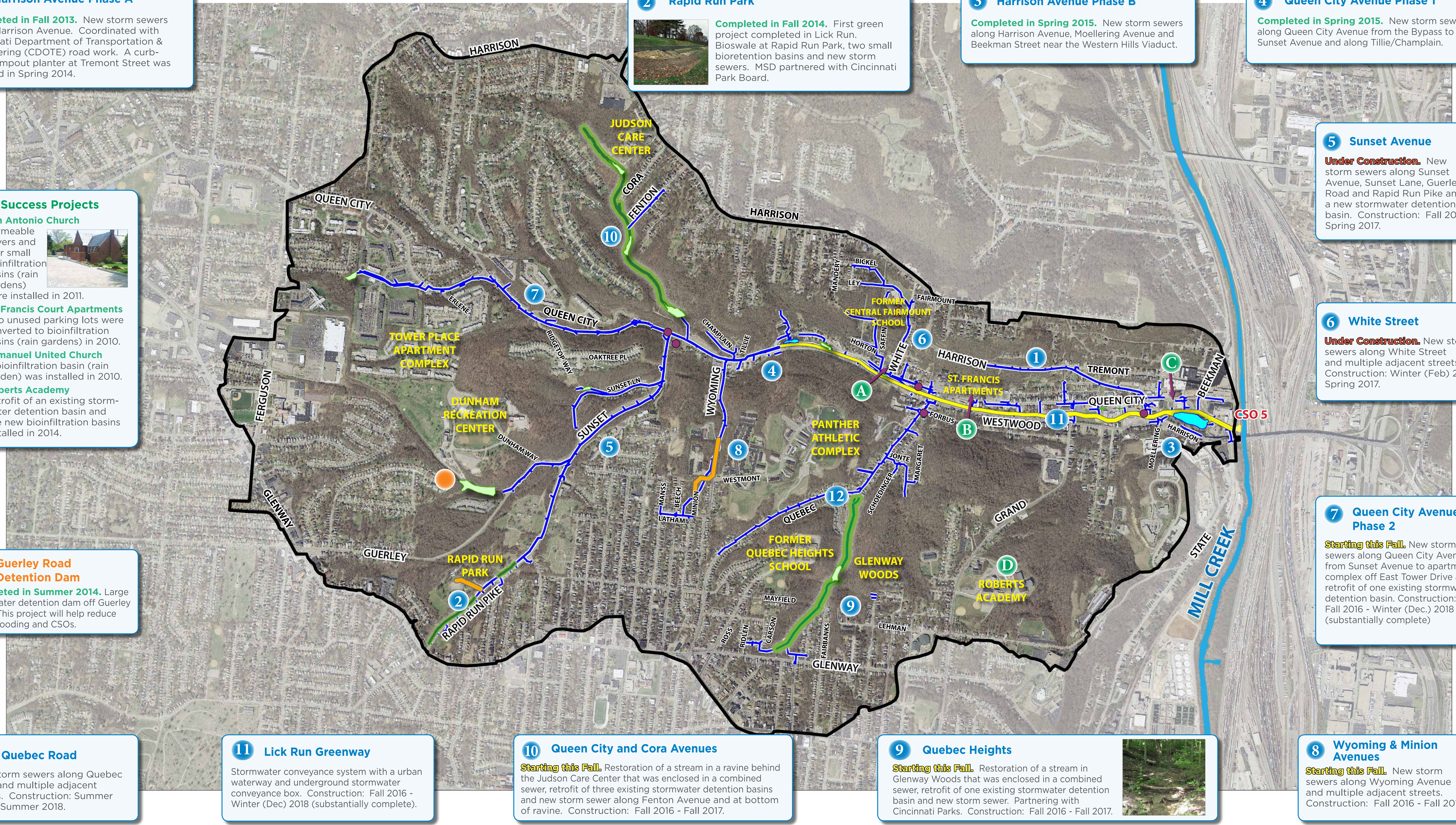
Under Construction. New storm sewers along White Street and multiple adjacent streets. Construction: Winter (Feb) 2016 - Spring 2017.

7 Queen City Avenue, Phase 2

Starting this Fall. New storm sewers along Queen City Avenue from Sunset Avenue to apartment complex off East Tower Drive and retrofit of one existing stormwater detention basin. Construction: Fall 2016 - Winter (Dec.) 2018 (substantially complete)

5 Sunset Avenue

Under Construction. New storm sewers along Sunset Avenue, Sunset Lane, Guerley Road and Rapid Run Pike and a new stormwater detention basin. Construction: Fall 2015 - Spring 2017.



METROPOLITAN SEWER DISTRICT
of greater
CINCINNATI

