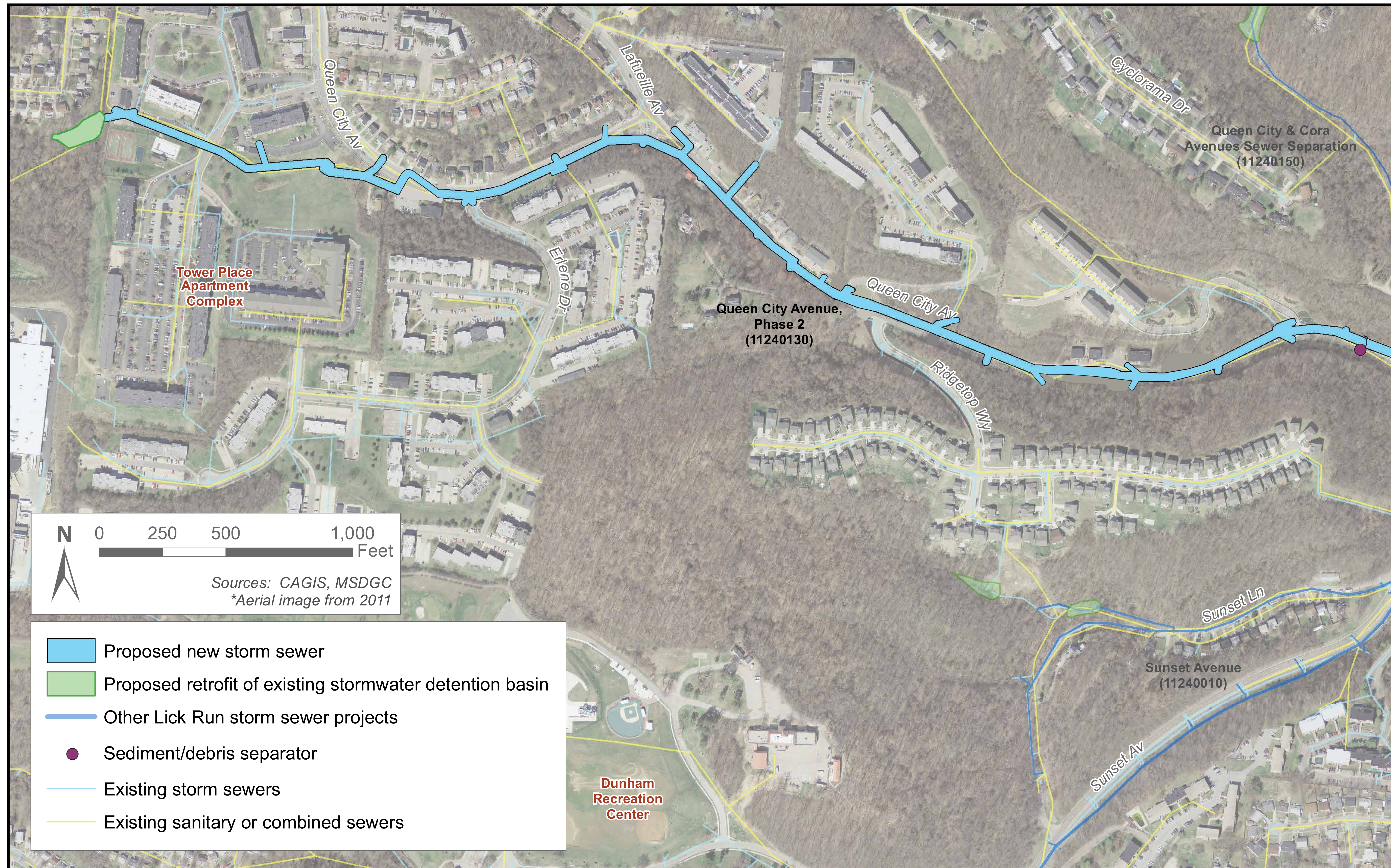


# QUEEN CITY AVENUE PHASE 2

## Starting in the Fall

**Anticipated Construction:** Fall 2016 - Winter (Dec) 2018 (substantially complete)



**Project Description:** About 6,000 linear feet of new storm sewer will be installed along Queen City Avenue between Sunset Avenue and an apartment complex off East Tower Drive. This project also includes the retrofit of one existing stormwater detention basin behind the apartment complex. This project will connect to storm sewers along Queen City Avenue.