

Quebec Heights Sewer Separation & Sewer Rehabilitation Project



Project Purpose

The Metropolitan Sewer District of Greater Cincinnati (MSD) will construct a “green infrastructure project” in East Price Hill beginning in early March 2017.

This effort — part of the Lick Run Project — will keep nearly 11 million gallons of stormwater out of MSD’s combined sewer system each year and help reduce sewer overflows into the Mill Creek.

The project will collect stormwater from local streets and a ravine and ultimately convey it to the Lick Run Greenway in South Fairmount. *Please see project map on back.*

Project Description

The project includes the construction of new storm sewers in and around **Ridlen, Wessels, Carson, Drott and Glenway Avenue**. It also includes the restoration of a stream and retrofitting of an existing stormwater detention basin in a greenspace area (owned and maintained by Cincinnati Parks as Glenway Woods Preserve) behind the former Quebec Heights school.

The work in the ravine involves:

- Closing off stormwater inlets along the stream bed to the combined sewer system that runs beneath it.
- Stabilizing the stream banks with native plants to prevent erosion and adding stream features such as ledge rock cascades, log vanes and steps pools to slow the flow of water.
- Improving an existing stormwater detention basin to slow the flow of water.
- Construction of a maintenance access path.

The project will connect at the downstream end to storm sewers installed along Quebec Road.

About 113 trees will be removed from the project area prior to construction. However, 229 trees, 177 new shrubs, and 51,000 plants will be planted as part of the project.



Example of a stream restoration (ledge rock cascade and step pool)



Project Area

In addition, MSD will reline the combined sewer that runs under the ravine to keep it in good working condition.

Construction Schedule and Method

MSD’s contractor, Sunesis Construction, will work primarily during daylight hours Monday through Friday. Weekend work may be necessary at times. The projected schedule is as follows:

- Construction: **Spring 2017 through Spring 2018**, depending on weather and the contractor’s schedule.
- Final restoration of areas disturbed during construction (e.g., street, curbs, driveways, sidewalks, trees, plants): **Spring 2018**.

Temporary Inconveniences

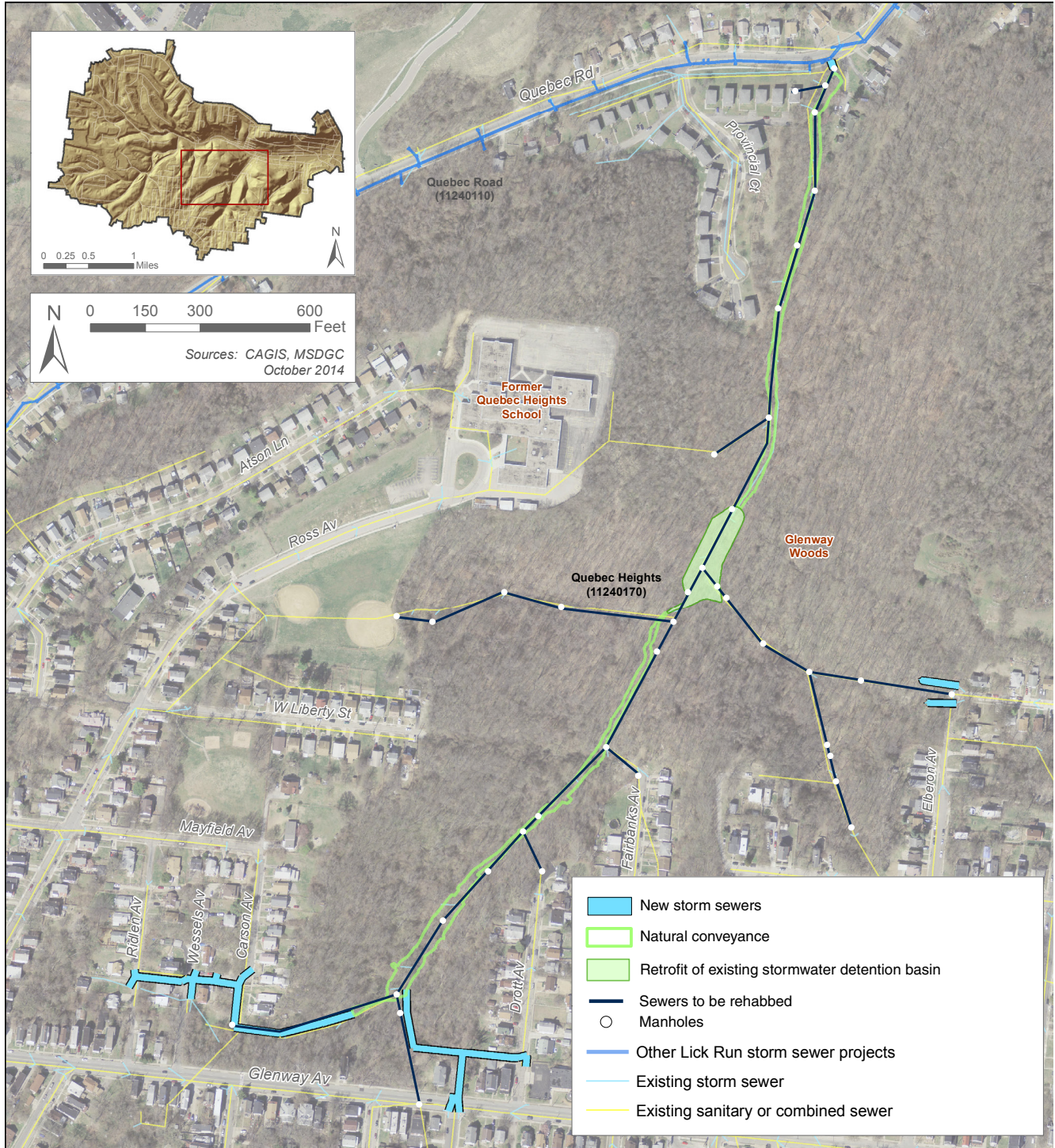
- Temporary traffic delays along Glenway Avenue.
- Access to Glenway Woods Preserve will be maintained but could be restricted at times.
- Noise, vibrations, dust, dirt, concrete barricades and fencing.
- Staging of construction equipment and materials within Glenway Woods Preserve.

Safety

- Expect delays in and around the construction area. Plan travel time accordingly to avoid stress and frustration.
- Follow the speed limit. Speed limits in construction zones are frequently lower than normal.
- Children and pets are often curious about construction work. Keep them away from machinery, trenches and pits at all times.
- If you see a potentially unsafe situation or equipment/fencing that requires repair, please contact MSD Customer Service. If you become aware of a public safety hazard, please call 911 immediately.

This project is part of MSD’s Project Groundwork, which is designed to make our communities cleaner, healthier and more economically sustainable.

Project Map



If you have any questions or concerns about the construction or property restoration, please contact **MSD Customer Service** at **(513) 557-3594** or **MSD.Communications@cincinnati-oh.gov**