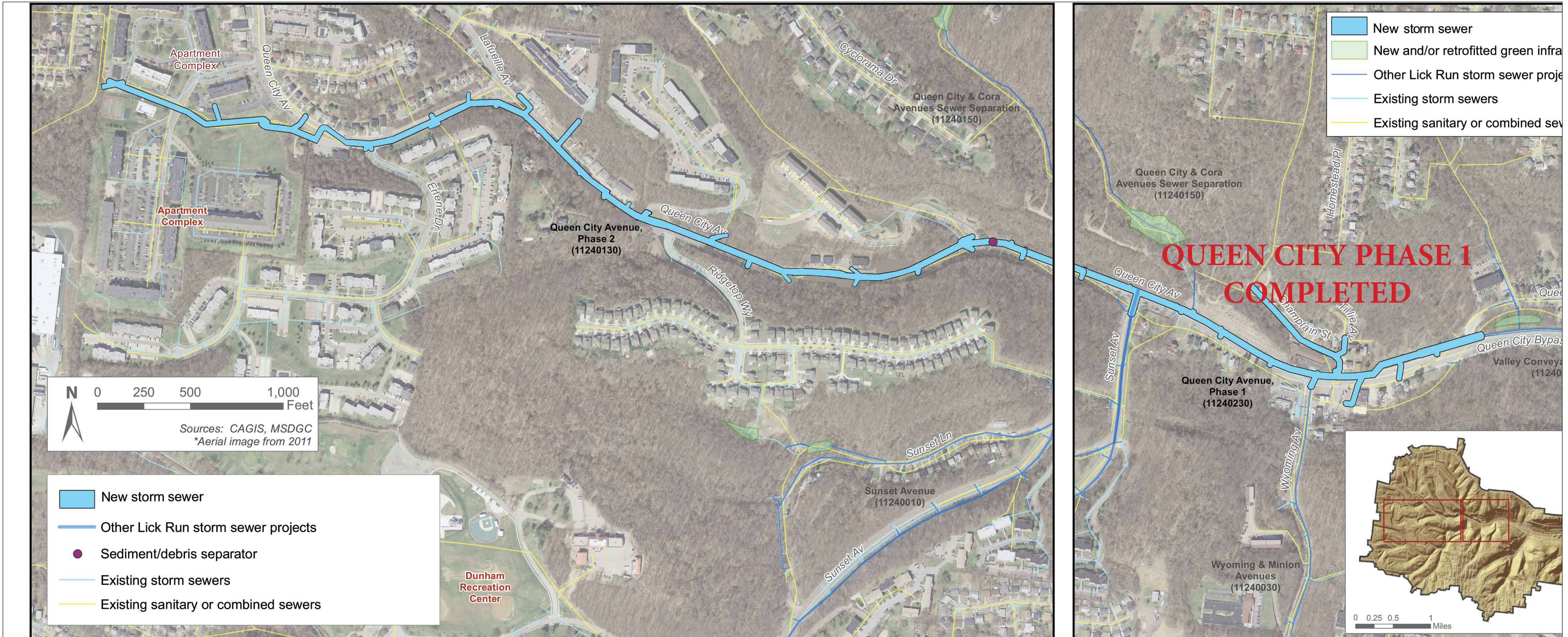


QUEEN CITY AVENUE PHASE 2

Starting in the Fall

Anticipated Construction: Fall 2017 - Summer 2019
(substantially complete per Consent Decree by 12-31-18)



Project Description: About 6,000 linear feet of new storm sewer will be installed along Queen City Avenue between Sunset Avenue and an apartment complex off East Tower Drive. This project will connect to storm sewers along Queen City Avenue.