

# Wyoming & Minion Avenues Sewer Separation Project



## Project Purpose

The Metropolitan Sewer District of Greater Cincinnati (MSD) will install new storm sewers in West Price Hill beginning in mid-March.

This effort — part of the Lick Run Project — will keep nearly 23 million gallons of stormwater out of MSD's combined sewer system each year and help reduce sewer overflows into the Mill Creek.

The project will collect stormwater from local streets and ultimately convey it to the Lick Run Greenway in South Fairmount. *Please see project map on back.*

## Project Description

The project includes the construction of new storm sewers along **Wyoming Avenue** and side streets: **Beech, Latham, Minion, and Manss**. Additionally, existing combined sewers will be relocated and converted to a storm sewer along Wyoming and Minion. The project will connect to storm sewers installed along Queen City Avenue.

The work consists of the following:

- Installing 3,514 feet of new storm sewer.
- Relocating 1,647 feet of combined sewer.

## Construction Schedule and Method

The contractor, Ford Development Corporation, will work primarily during daylight hours Monday through Friday. Weekend work may be necessary at times.

The projected schedule is as follows:

- Clearing of trees along the sewer route: **March 2017**.
- Construction: **late April/early May 2017 through Spring**



Photo depicting "open cut" method of construction.



Photo depicting project area.

**2018**, depending on weather and the contractor's schedule.

- Final restoration of areas disturbed during construction (e.g., street, curbs, driveways, sidewalks, grass): **Spring 2018**.

The storm sewer will be installed using traditional open cut methods. Open cut construction involves digging an open trench in the ground for sewer pipe installation.

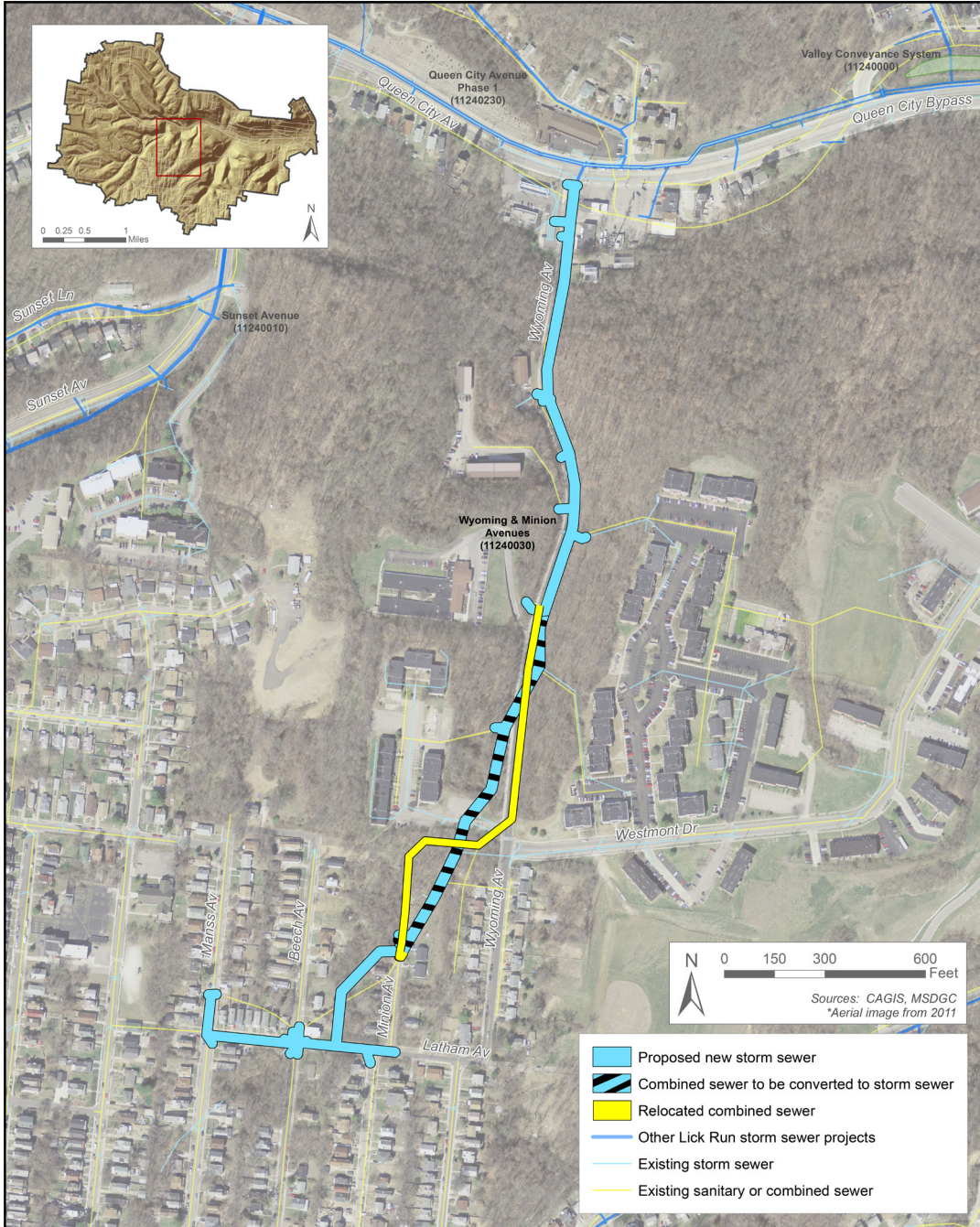
## Temporary Inconveniences

- Temporary traffic delays along Wyoming Avenue and side streets Beech, Latham, Minion and Manss.
- Noise, vibrations, dust, dirt, concrete barricades and fencing.
- Staging of construction equipment and materials within and around the project area.

## Safety

- Expect delays in and around the construction area. Plan travel time accordingly to avoid stress and frustration.
- Follow the speed limit. Speed limits in construction zones are frequently lower than normal.
- Children and pets are often curious about construction work. Keep them away from machinery, trenches and pits at all times.
- If you see a potentially unsafe situation or equipment/fencing that requires repair, please contact MSD. Customer Service. If you become aware of a public safety hazard, please call 911 immediately.

# Project Map



If you have any questions or concerns about the construction or property restoration, please contact **MSD Customer Service** at **(513) 557-3594** or **MSD.Communications@cincinnati-oh.gov**