



## PROJECT GROUNDWORK

*your pipeline to clean water*

### CONTENTS

- Project Groundwork Is Coming
- Sewer Improvements Are Being Planned for Your Neighborhood
- The Westwood Northern Bundle at a Glance
- The Partial Sewer Separation Process
- The Westwood Northern Bundle Is Currently Under Design
- Project Area Map
- Connecting with Our Team
- Community Meeting Information

# Project Groundwork Is Coming to the Westwood Northern Area

During wet weather, our sewers frequently become overloaded with storm water. When this happens, the excess wastewater – storm water mixed with raw sewage – overflows into local rivers and streams. This occurs because our sewer system, like virtually every other system in America, was built to perform that way. This was once acceptable. It isn't anymore.

Today, the Metropolitan Sewer District of Greater Cincinnati (MSD) is focused on reducing and, when possible, eliminating sewer overflows into our environment.

Our solution to this public health and environmental issue is Project Groundwork, one of the largest public works

projects in our local history. Estimated at more than \$3 billion over the next 25 years, this program is comprised of hundreds of projects designed to accomplish a number of goals, including: reduce overflows from combined sewers, improve storm water control, and reduce sewer debris and odors in local streams and surrounding areas.

Project Groundwork was created to make our communities cleaner, healthier, and more environmentally, socially and economically sustainable. It also will help revitalize the local economy by creating jobs and growth opportunities for local businesses.

## Sewer Improvements Are Being Planned for Your Neighborhood

One of the projects we are launching under Project Groundwork will take place in the neighborhoods west of Mt. Airy Forest, bounded roughly by Westwood Northern Boulevard, North Bend Road, Harrison Avenue and Montana Avenue (see map inside).

During wet weather events, such as heavy rainstorms and large snow melts, sewers overflow into nearby waterways at three different locations within this area. Reducing these combined sewer overflows (CSOs) is a top priority for MSD, and this month, we begin the initial stage of resolving the problem. **Our solution is called the Westwood Northern Bundle.** It is a seven-year project whose key elements are outlined on the following pages.

We are committed to keeping you informed about this project throughout design and construction and we welcome your questions and comments. We want to talk with you. We will respond.

We are excited about the Westwood Northern Bundle. It's one of our highest Project Groundwork priorities, and its completion will make a marked improvement in the health of your community's natural environment. We look forward to working with you to make this project a success.

**More information about Project Groundwork is available at [www.projectgroundwork.org](http://www.projectgroundwork.org).**

# Westwood Northern Bundle Quick Facts

## **Purpose**

To reduce combined sewer overflows in the Westwood Northern area

## **Project Type**

Partial Sewer Separation – Surface water currently overwhelming the existing combined sewer system will be redirected into a new, separate storm sewer.

## **Project Location**

The project area is roughly bounded by Westwood Northern Boulevard, Harrison Avenue, North Bend Road and Montana Avenue (see map). Affected communities include Green Township, City of Cheviot, City of Cincinnati and Hamilton County.

## **Project Scope**

The project encompasses five miles of sewer lines that serve approximately 500 homes.

## **Project Duration**

*Design:*

Now through late 2012

*Construction:*

Late 2012 through 2017 (work will likely be completed using staggered, two-year contracts)

## **Project Cost**

Approximately \$14 million

## **For More Information**

[www.projectgroundwork.org/westwoodnorthern](http://www.projectgroundwork.org/westwoodnorthern)

## The Westwood Northern Bundle at a Glance

Like most combined sewer areas, sewers overflow in the Westwood Northern area mostly because the existing combined sewers (sewers designed to collect and transport both sanitary sewage and storm water to sewer plants for treatment) are overwhelmed by storm water during wet weather. When this happens, the excess wastewater is released into nearby streams and creeks to ease pressure on the sewer system and prevent backups into homes and businesses.

MSD has determined that the best way to address the combined sewer overflows (CSOs) in this area is to redirect surface water runoff into a separate storm sewer that will be constructed roughly along the same alignment as the existing sewers. This is called a partial sewer separation, and it will significantly reduce the amount of storm water flowing through the combined sewer system. This, in turn, will significantly reduce the volume of sewer overflows in the area.

MSD is also exploring opportunities to use “green” technology to keep storm water out of the combined sewers. Such possibilities may include detention ponds and bioswales. These options and how they can be used effectively are currently under study.

The solution planned for the Westwood Northern Bundle will work hand in hand with other measures MSD is and will be implementing across the region to reduce and eliminate overflows and improve the quality of life in our community. More information regarding these efforts is available at [www.projectgroundwork.org](http://www.projectgroundwork.org).

## The Partial Sewer Separation Process

To partially separate the combined sewers in your area, crews must excavate around the existing sewers, install new storm sewers and make adjustments to the current lateral connections. The exact needs will vary from street to street, and more information will be available as we progress further in the design process, which is now underway.

When possible, construction will be done in the public right-of-way, which runs along streets and sidewalks. Nearly 70% of the existing sewer lines are already located in the right-of-way. During construction, lane closures will be needed to access the sewer lines, but local traffic will be maintained. Work also will be completed during normal working hours. While construction of this nature can sometimes be disruptive, it’s our goal to minimize inconvenience to residents as much as possible.

At times, it will be necessary to work on private property. Much of this will take place along existing easements. In other cases, we will need to work with property owners to obtain new easements. Once final alignments are determined, MSD will contact and meet with affected property owners to ensure they are well informed about the project and how their properties will be impacted, familiarize them with the easement process, and answer their questions and concerns. While we don’t yet know who will be affected, we do know that once construction is complete, all properties will be left in equal or better condition than before construction began.

# The Westwood Northern Bundle Is Currently Under Design

The Westwood Northern Bundle is a seven-year project from design to completion. We are currently in the design phase, which is expected to conclude in late 2012. During this phase, we will identify and evaluate possible alignments for the new sewers. The alignment we ultimately choose will be selected based on several factors, including efficiency and effectiveness, impact of construction on residents and property owners (the less impact, the better) and cost. Once the final alignment is identified, we will prepare the necessary engineering designs for construction.

During the design phase, crews will be in your neighborhood performing a variety of surveys, including:

## **Environmental and Ecological Surveys** –

A visual assessment of the plant material and condition of the land overlaying existing sewer lines

**Underground Survey** – An assessment of the configuration of existing sewers and other utilities

**Topographical Survey** – A measurement and mapping of all surface features, such as houses, trees and roads

**Geotechnical Investigation** – An identification of the soil types and geology within the project area and an evaluation of their engineering properties

Most survey work will take place in the public right-of-way; however, MSD will contact you should access to your property be necessary during any of these surveys.

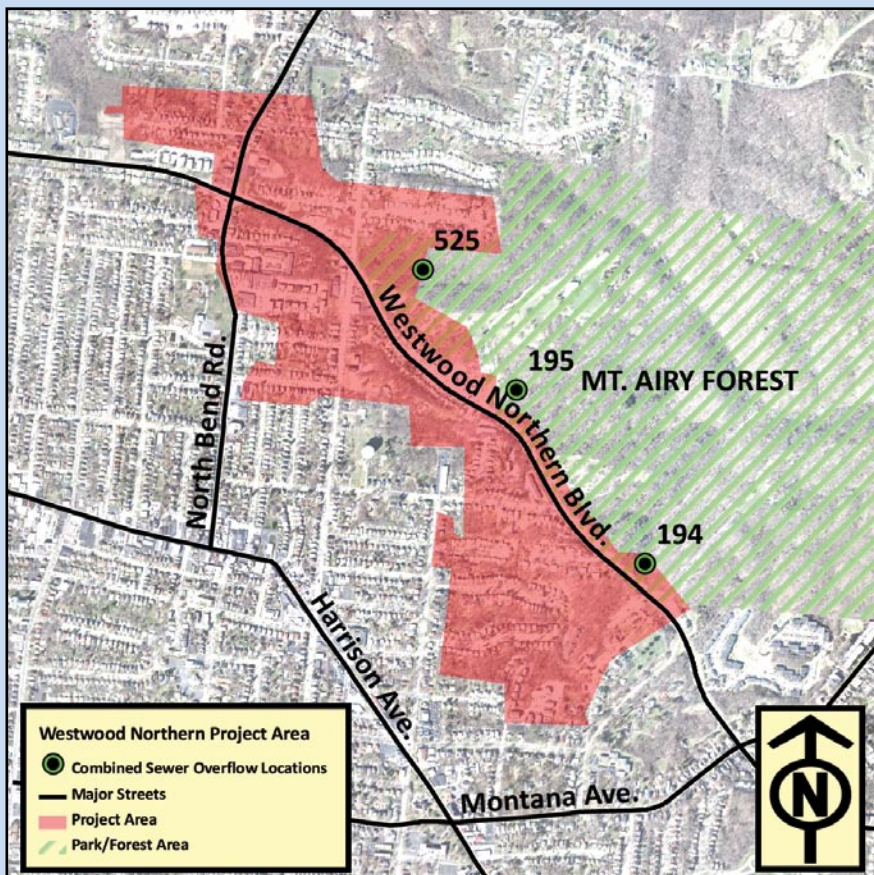
We will continue to keep you informed of our progress throughout the design process by using our project website, [www.projectgroundwork.org/westwoodnorthern](http://www.projectgroundwork.org/westwoodnorthern); submitting information to the *Western Hills Press* and your local community newsletters; sharing updates with your public officials; and hosting community meetings.

Once design is complete in late 2012, construction can begin. While it's possible that all work will be completed under a single contract, work may instead be completed using multiple, staggered, two-year contracts.

More detailed information about the construction phase and schedule will be available as we get closer to that date.

## Project Area Map

The Westwood Northern Bundle project area is located west of Mt. Airy Forest and is roughly bounded by Westwood Northern Boulevard, Harrison Avenue, North Bend Road and Montana Avenue.



## Connecting with Our Team

MSD is committed to keeping you informed about this project and our progress, and we invite your feedback. There are a number of opportunities for you to connect with the project team. These include:

- **Community meetings:**  
The first meeting will be held on [June 24 from 7 – 9 p.m.](#)  
[Westwood Town Hall Recreation Center](#)  
[3017 Harrison Ave.](#)
- **The project website:**  
[www.projectgroundwork.org/westwoodnorthern](http://www.projectgroundwork.org/westwoodnorthern)  
Questions and comments can be submitted to the project team on this site.
- **E-mail:**  
[MSD.WestwoodNorthern@cincinnati-oh.gov](mailto:MSD.WestwoodNorthern@cincinnati-oh.gov)  
E-mail is checked regularly.
- **Project team contact:**  
[Julie Schroeder, Project Manager](#)  
(513) 244-1339



**PROJECT GROUNDWORK**  
*your pipeline to clean water*

Metropolitan Sewer District  
of Greater Cincinnati  
1600 Gest St.  
Cincinnati, OH 45204

**For More Information**

[www.projectgroundwork.org/  
westwoodnorthern](http://www.projectgroundwork.org/westwoodnorthern)

## *Sewer Improvements Are Being Planned For Your Neighborhood*

**The Metropolitan Sewer District  
of Greater Cincinnati invites you to the  
Westwood Northern Bundle  
Community Meeting**

**Thursday, June 24, 2010  
7–9 p.m.**

**Westwood Town Hall Recreation Center  
3017 Harrison Ave., Cincinnati, OH 45211**

**Learn why combined sewer overflows happen**

**Find out how MSD is working to  
resolve the problem**

**Get details on the project planned  
for your neighborhood**

**Share your questions and comments  
with project team members**

*MSD is currently designing a \$14 million sewer separation project that will reduce combined sewer overflows in nearby waterways. The project will affect neighborhoods roughly bounded by Westwood Northern Boulevard, North Bend Road, Harrison Avenue and Montana Avenue. At the community meeting, project team members will be on hand to provide a project overview, explain the planning and design process, discuss anticipated effects on project area residents and properties, and address your comments and questions. More information is provided in this newsletter and at [www.projectgroundwork.org/westwoodnorthern](http://www.projectgroundwork.org/westwoodnorthern).*