

Metropolitan Sewer District of Greater Cincinnati

Community Meeting for the Westwood Northern Bundle



PROJECT GROUNDWORK
your pipeline to clean water

June 24, 2010

Community Meeting Agenda

I. Welcome

Julie Schroeder, MSD Project Manager

II. Introductions and Room Instructions

III. Meeting Objectives

IV. Wet Weather Video

V. Westwood Northern Bundle

VI. Questions and Answers



PROJECT GROUNDWORK
your pipeline to clean water



Wet Weather Video

The video shown at the public meeting is available on the Project Groundwork website's home page (<http://projectgroundwork.org>).

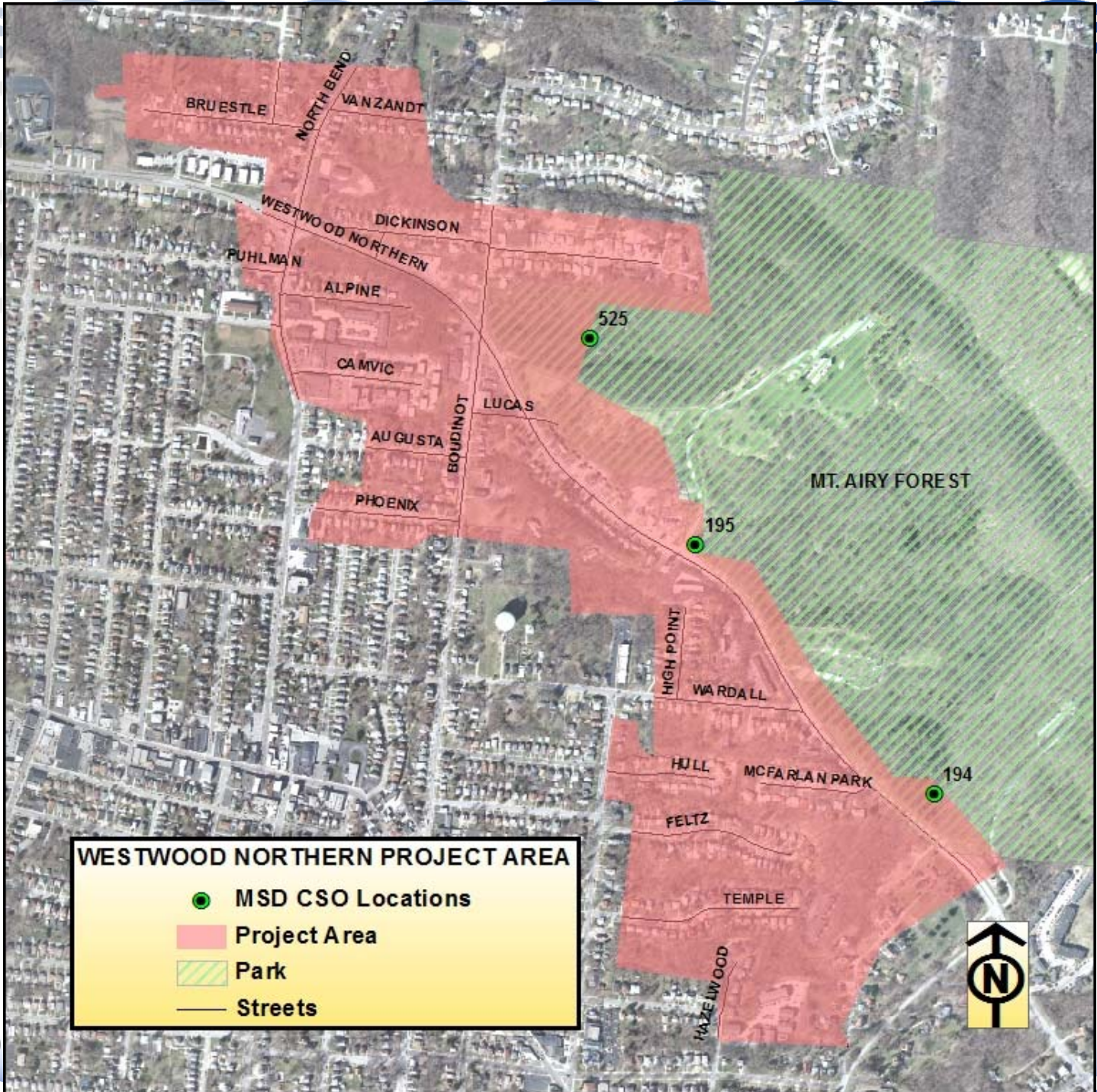
The direct link to the video is:

<http://projectgroundwork.org/downloads/groundwork.flv>

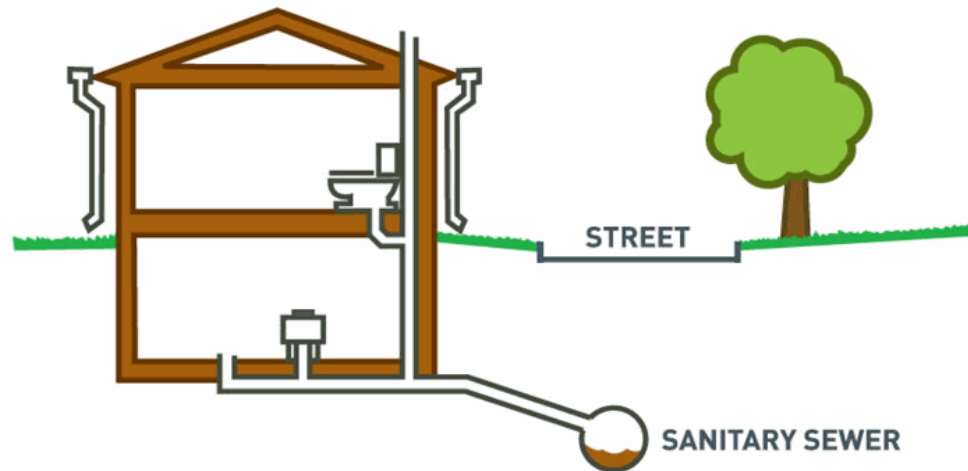


Project Groundwork

- Project Groundwork is an MSD wide program
 - Funded by MSD rates
 - Designed to reduce overflows
 - Includes several Bundles
- A Bundle is a set of projects
- Westwood Northern Bundle has 3 projects



Sanitary Sewer Definition



Sanitary Sewers collect only sanitary waste

- Sanitary waste from toilets, sinks, washers, etc.
- Transports waste to wastewater treatment plant

Storm Sewer Definition



Drain



Street Inlet

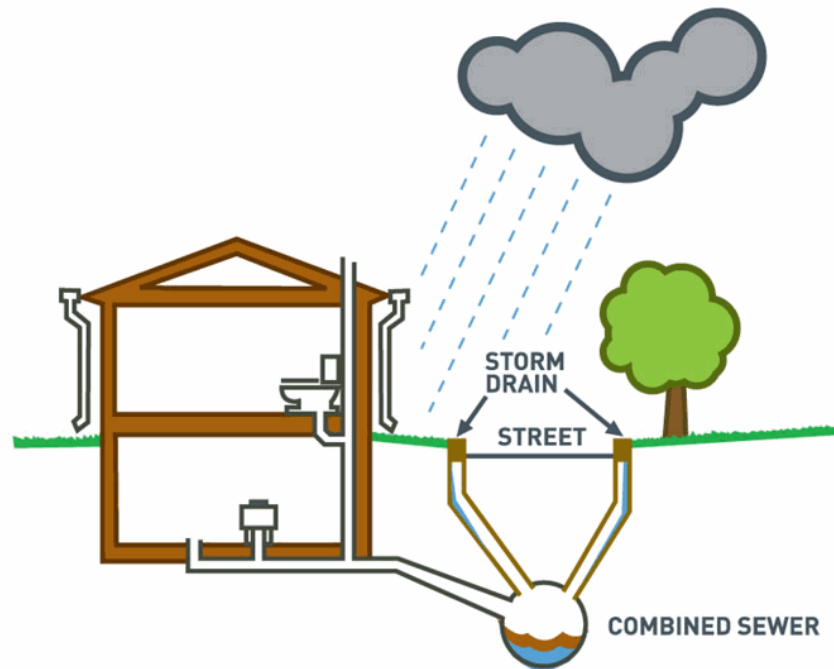


Rain Garden Inlet

Storm sewers collect only storm water

- Storm water from street inlets, yard drains, etc.
- Only active during wet weather events
- Transports storm water to stream or river

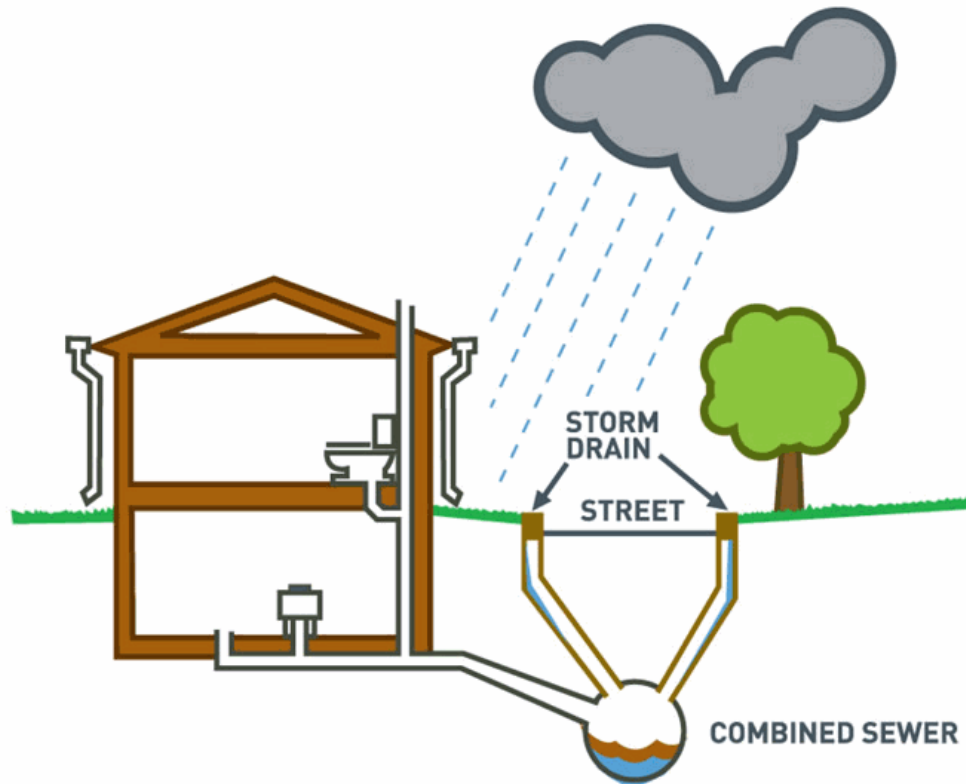
Combined Sewer Definition



Collects both storm water and sanitary waste

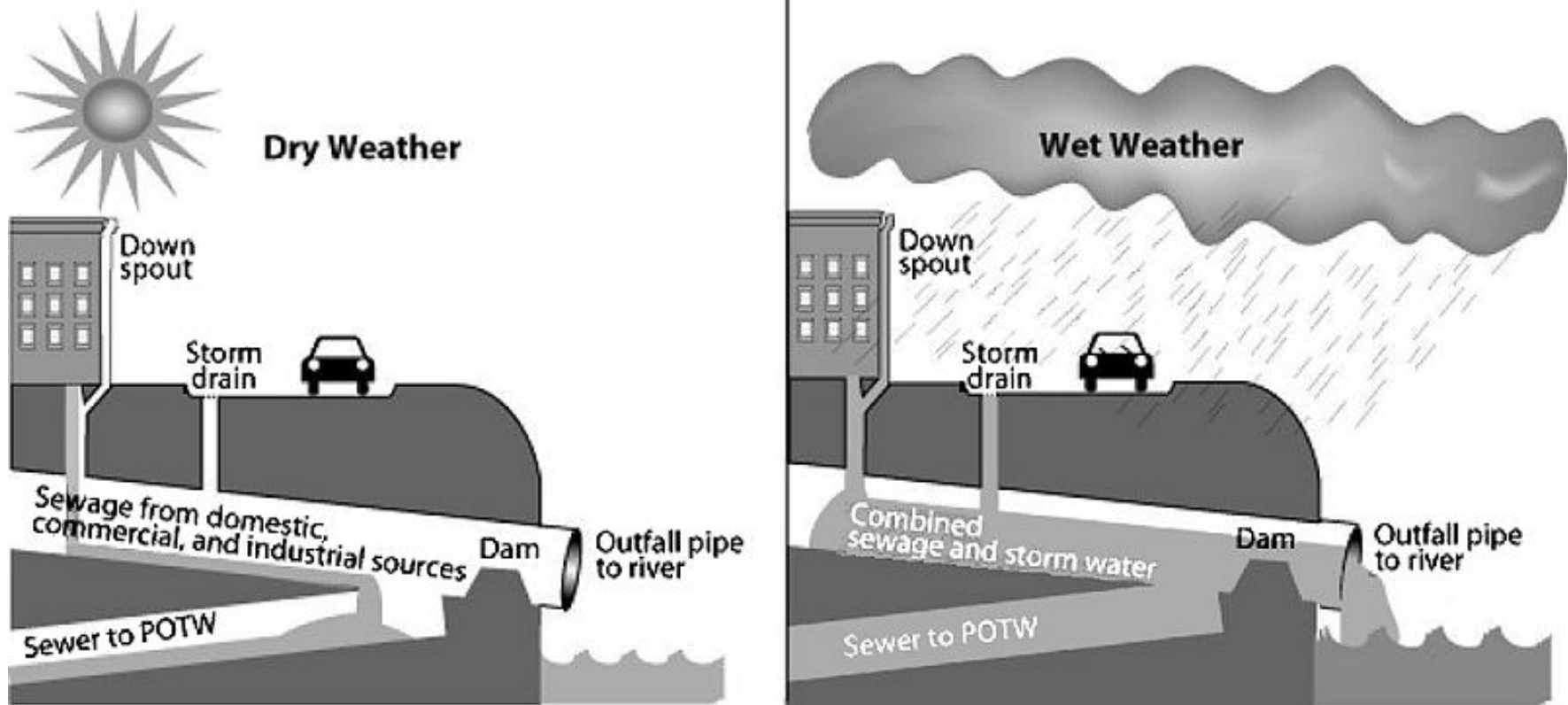
- Transports flow to wastewater treatment plant and to stream
- Wet weather flows are separated at the CSO


What is a "CSO"?



A CSO is an overflow of wastewater from a Combined Sewer (CSO = Combined Sewer Overflow)

Why Do CSOs Occur?





**MSD is focused on reducing
and, when possible,
eliminating sewer overflows
into our environment.**



Purpose of the Westwood Northern Bundle:

Reduce volume of combined
sewage overflowing into
nearby streams.

Solution:

Partial Sewer Separation

- Separate storm water from sanitary waste
- Install a second sewer roughly along the same alignment as the existing sewers
- One will become a storm sewer, one will be a sanitary sewer



PROJECT GROUNDWORK
your pipeline to clean water

Sewer Construction Methods - Trench



**Trench Method within
public right of way**



**Trench Method outside of
public right of way**

Sewer Construction Methods - Trenchless



Trenchless Method

- Requires large pits
- Longer duration for construction than trench method
- More expensive than trench method

Project Status: In Design

(Now through 2012)

- **Preliminary Design**
 - Gather information
 - Analyze Alternatives
 - Select Preferred Alternative
- **Final Design**
 - Detailed construction plans
 - Specifications
 - Cost Estimate



PROJECT GROUNDWORK
your pipeline to clean water

Gather Information: Surveys

- **Underground**
 - Manholes
 - Sewers
- **Topographic**
 - Streets
 - Drives
 - Sidewalks
 - Trees
 - Landscaping
 - Other Utilities



Gather Information: Soil Borings



- For:
 - Type of soil
 - Depth of rock
- Location:
 - In street
 - In yard

MSD Design Consultant

Prime Consultant



Subconsultants

Malcolm-Pirnie

ARCADIS U. S.

Abercrombie & Associates, Inc.

Saybrook Marketing Communications

H. C. Nutting



PROJECT GROUNDWORK
your pipeline to clean water

Project Representatives Will Have an MSD ID Badge

- Identifies:
 - MSD Personnel
 - Authorized Representative
- Background Color:
 - Yellow
 - Blue
 - Pink



Preliminary Design: Alternatives Analysis

Each alternative considers:

- Type of Sewer: Storm or Sanitary
- Sewer size
- Depth of connections
- Impact on properties and residents
- Location of other utilities
- Method of construction
- Other design considerations
- Cost (major factor)



PROJECT GROUNDWORK
your pipeline to clean water



Preliminary Design: Preferred Alternative

- May be combination of new storm and new sanitary sewers
- Approval by MSD and Storm Water Jurisdictions:
 - Stormwater Management Utility
 - Hamilton County Public Works
 - Hamilton County Engineer's Office
 - Green Township
 - City of Cheviot
 - Ohio EPA
- Establishes sewer location within a corridor
Which side of the street, for example

30% Design: Alignment

- Establishes alignment with the corridor
The distance between the new sewer and the existing sewer, for example
- Alignment may cross private property
MSD will work closely with affected property owners
- Start right-of-way plans



PROJECT GROUNDWORK
your pipeline to clean water

Final Design: 60%, 90% and Final

- In each phase:
 - Details of construction are worked out
 - Cost estimate updated
 - Specifications edited
- Right-of-way plans are complete at 60% design
 - Drawings show required easements with relation to the property and the new sewer



PROJECT GROUNDWORK
your pipeline to clean water

Public Right-of-Way



No right-of-way needed
for sewer work located within
public right-of-way

Right-of-Way and Easements

- Most work for this project will be in the public right-of-way
- Some work will be on private property
- Easement locations are not known at this time
- Types of easements
 - Temporary
 - Permanent



PROJECT GROUNDWORK
your pipeline to clean water

Project Schedule

Activity/Milestone

- Design
- Construction
- Consent Decree
Completion Deadline

Date

- 3/26/10 to December 2012
- December 2012 to July 2017
- December 2017



PROJECT GROUNDWORK
your pipeline to clean water

Construction Packages

- Bundle requires 27,000 feet of new sewer
- Smaller packages are needed
- Packages dependent on:
 - Location in public right of way
 - Easement availability
 - Other construction projects, e.g. paving



PROJECT GROUNDWORK
your pipeline to clean water

Construction Impacts to Residents

- Every effort will be made to minimize disruption
- Localized construction
- Residents should expect:
 - Lane Closures
 - Dust
 - Construction Equipment
- Contact number for questions



PROJECT GROUNDWORK
your pipeline to clean water

Access to Property

- Local access will be maintained
- Open trenches will be covered with steel plates in periods of no construction





Remember - MSD Wants to Hear From You

Website:

www.projectgroundwork.org/westwoodnorthern

Email:

msd.westwoodnorthern@cincinnati-oh.gov

Project Manager:

Julie Schroeder (513) 244-1339



PROJECT GROUNDWORK
your pipeline to clean water